



H Y S O P E II

**The THEIA hydrology data access and SWOT HR distribution system**

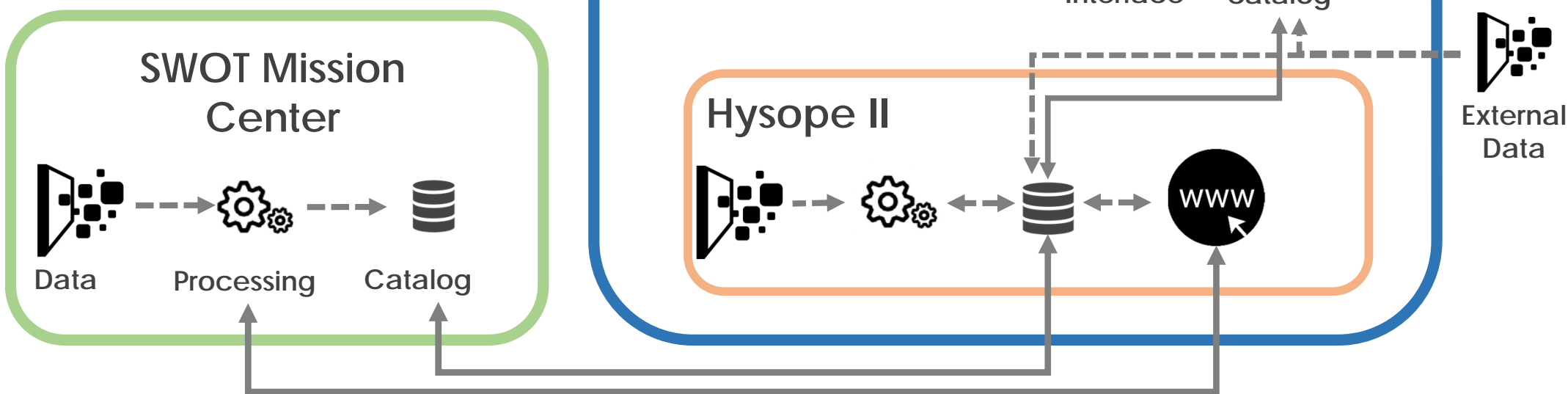
ST SWOT, 19/06/19





# Hysope II, what and where is it?

Hysope II aims to centralize, facilitate and provide a sustainable access to hydrological data: spatial (all 'variables'), in-situ and numerical models. It will distribute the SWOT HR products. It is meant for the scientific expert, public agencies and outreach.





# Hysope II, **why** and how?



Discover



Explore



Visualize



Process



Develop



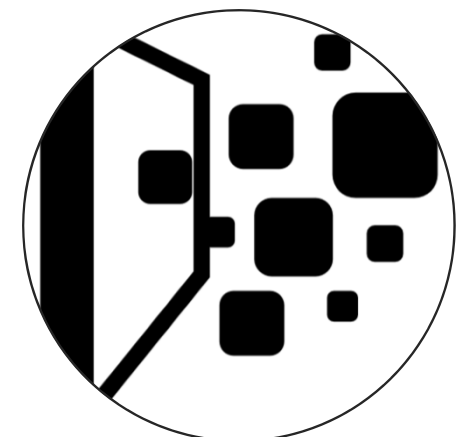
Homogeneize



Compare



Extract



Hydrology  
Big Data



# Hysope II, why and how?



Discover



Explore



Visualize



Process



Develop



Homogeneize



Compare



Extract



## Ingestion

Prepare data  
Harvesting metadata

## Referencing

Water DB  
Metacatalog  
Archiving

## Production center

Pre/post processing  
Products with more value,  
more coverage,...

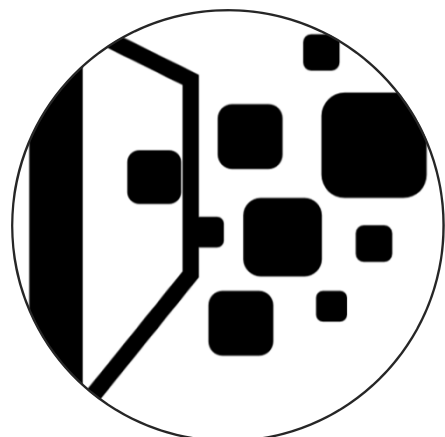
## Distribution center (Hydroweb-NG)

Visualization  
Distribution

## Sand Box center

Access to specific data and  
ressources

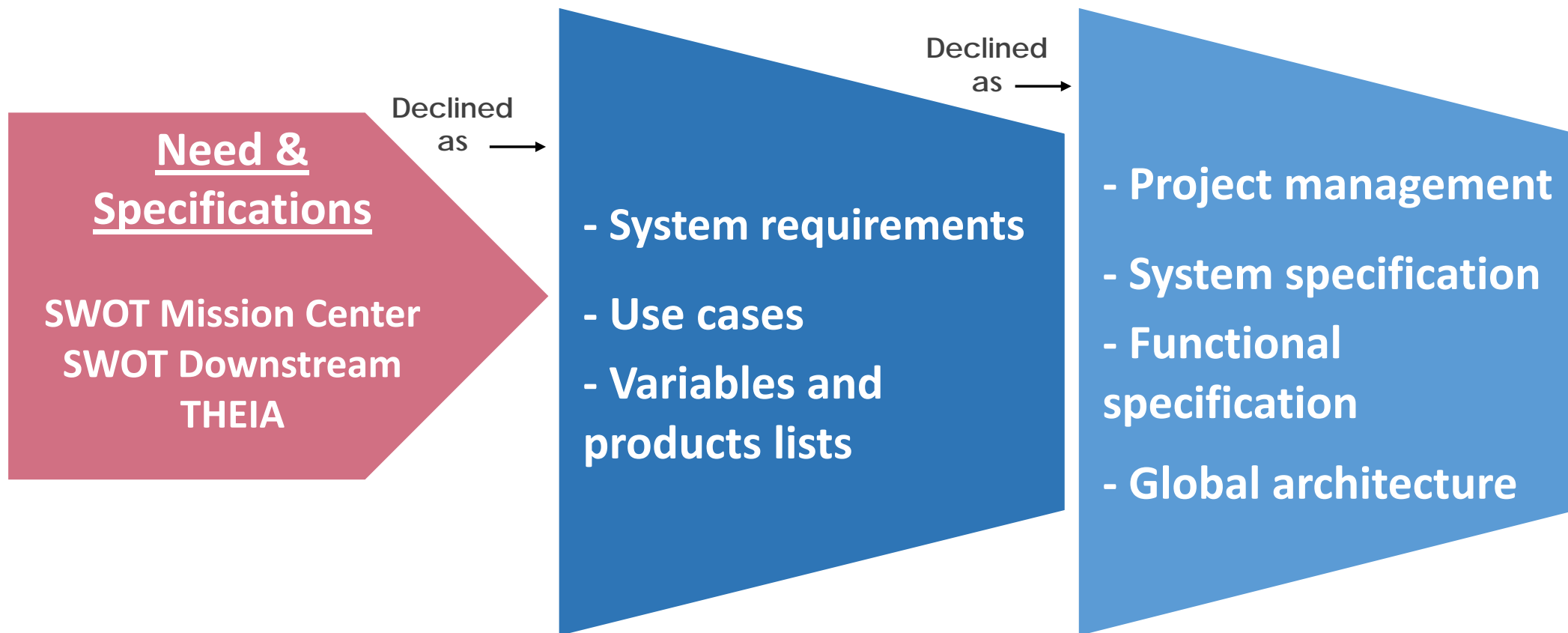
## System Supervision



Hydrology  
Big Data



## Hysope II, how to do it?





## Hysope II, Hydroweb-ng prototype

---

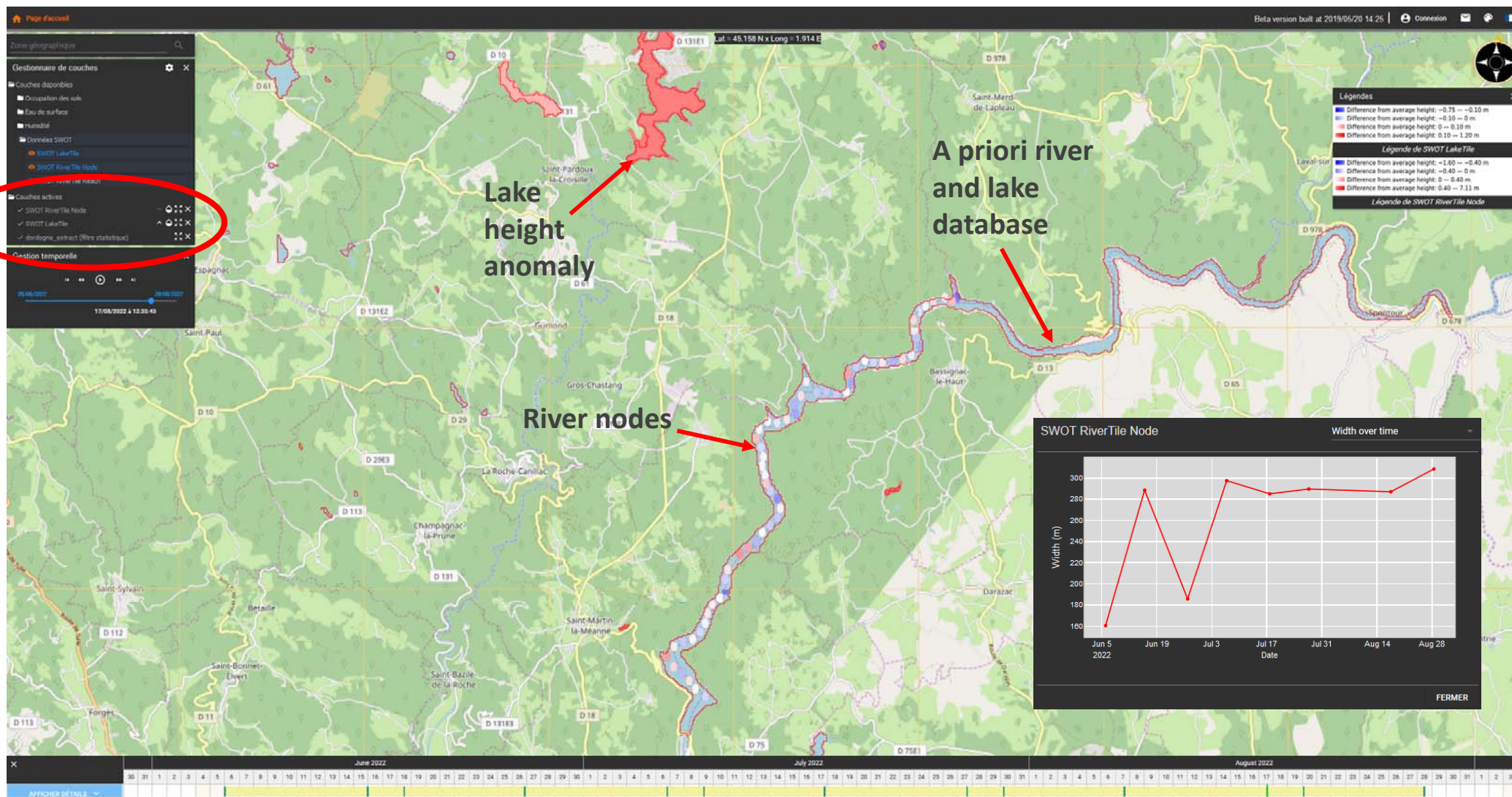


- **Hydroweb-ng is the web interface to access hydrological data**
- **Development of a prototype in order to :**
  - Quickly get practical elements for the project, SWOT Downstream and the SWOT mission community
  - Accelerate the definition of the system global architecture
  - Mature the IHM and its specifications / functionalities
  - Get/give feedbacks on hydrological data and specifically the SWOT HR products (format, structure)





# Hysope II, Hydroweb-ng prototype, the SWOT HR products.





# Hysope II, Planning

