



Recent advances in global hydrology modeling at CNRM, Météo-France

CTRIP-12D

MLake

SWOT DA

S. Munier, M. Lesaffre, S. Saysset, T. Guinaldot, A. Boone, P. Le Moigne

SWOT Science Team meeting - Bordeaux, 17-20 June 2019

SURFEX-CTRIP hydrological system



- **CTRIP** : CNRM version of the TRIP based river routing system

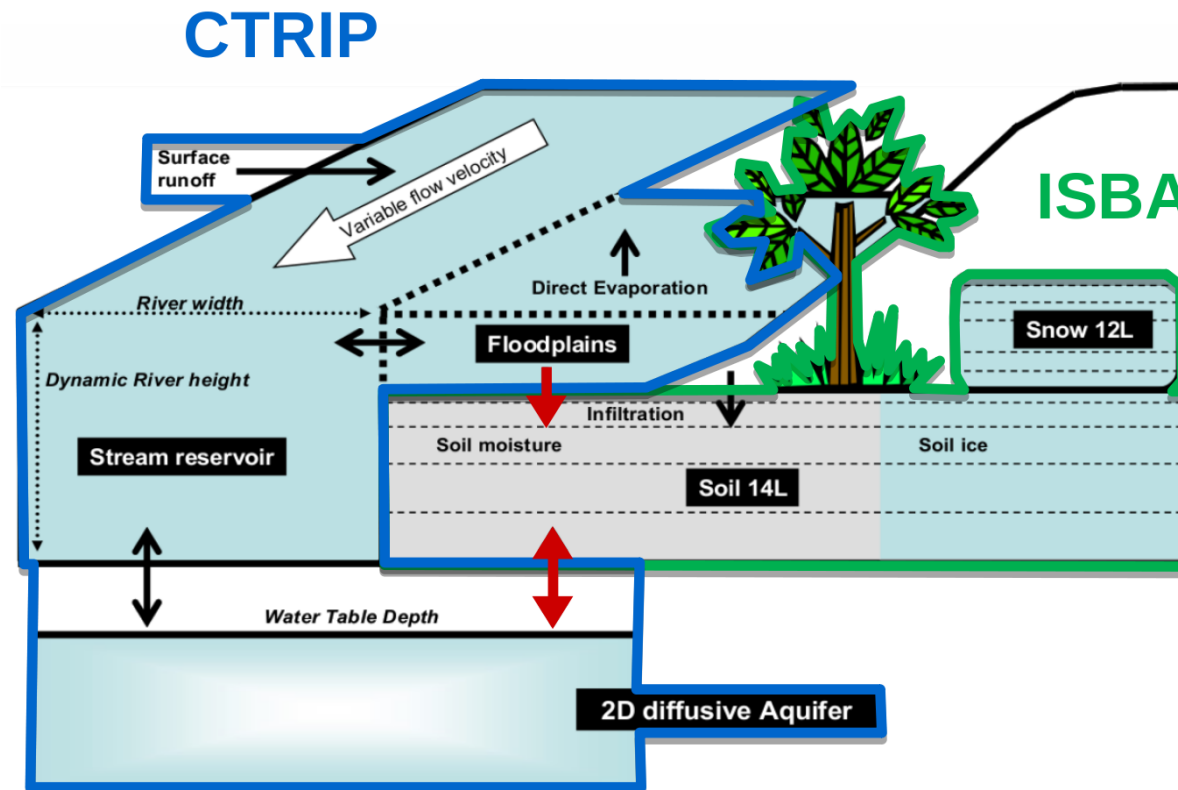
- variable flow velocity
- flooding by river overflow
- aquifers

(Oki and Sud, 1998, Decharme et al., 2019)

- **ISBA** : simulates the diurnal cycle of:

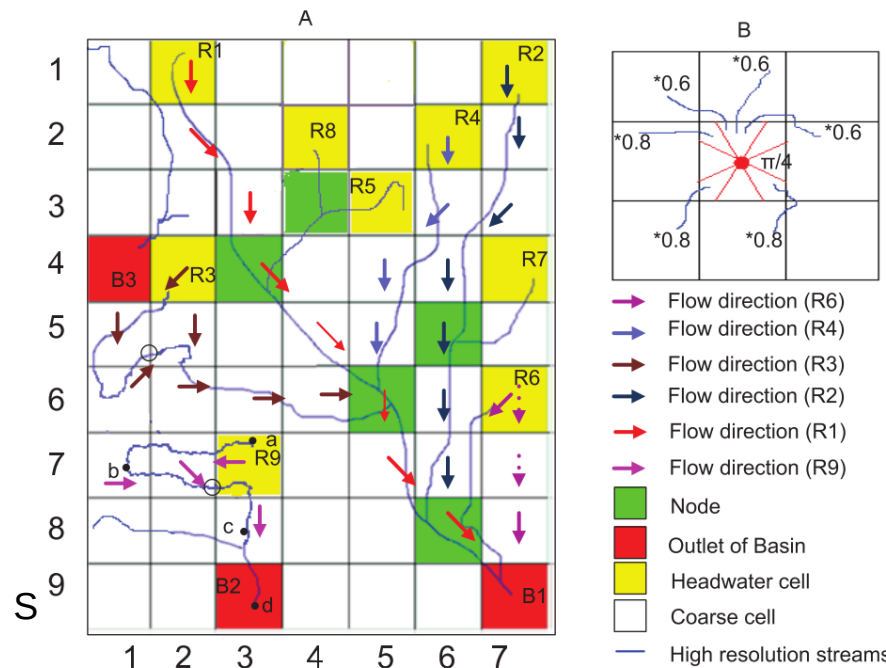
- water and carbon fluxes
- plant growth
- vegetation variables

(Calvet et al., 1998, 2007, Gibelin et al., 2006)



- Upscaling of the river network from MERIT Hydro (Yamazaki et al., 2019)
 - high-accuracy global DEM at 3" resolution (~90 m at the equator)
 - removal of major error components from existing DEMs
- Hierarchical Dominant River Tracing (DRT, Wu et al., 2011)
 - Extraction and upscaling of flow direction (D8)
 - Major rivers computed first
 - River diversion when necessary
 - Fully automated algorithm (no manual correction)

} *river network structure preserved*

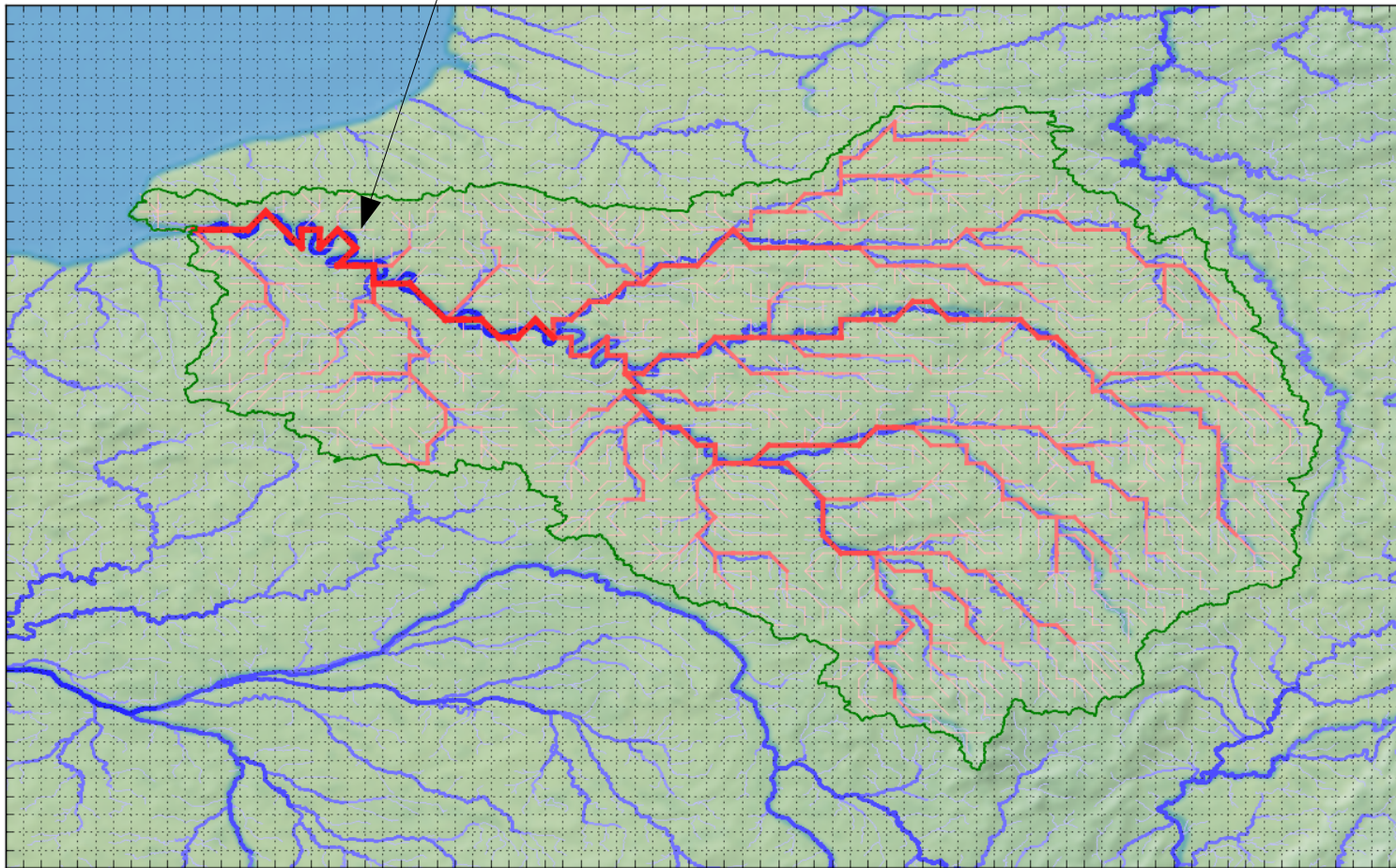


© 2019

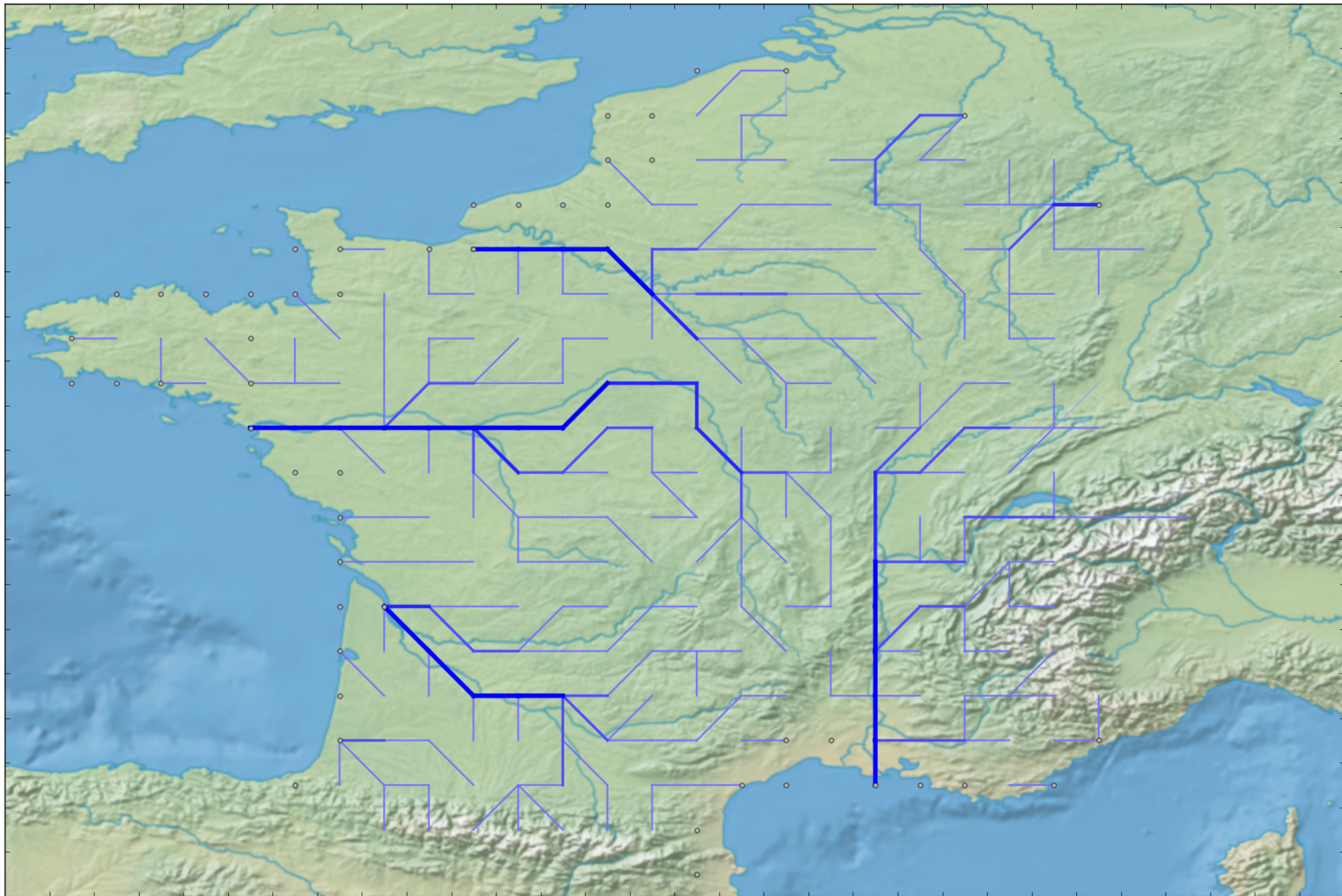
- Example of the Seine River basin

good representation of meanders

— Basin boundary
— MERIT 1200D
— CTRIP 12D



CTRIP-2D over France

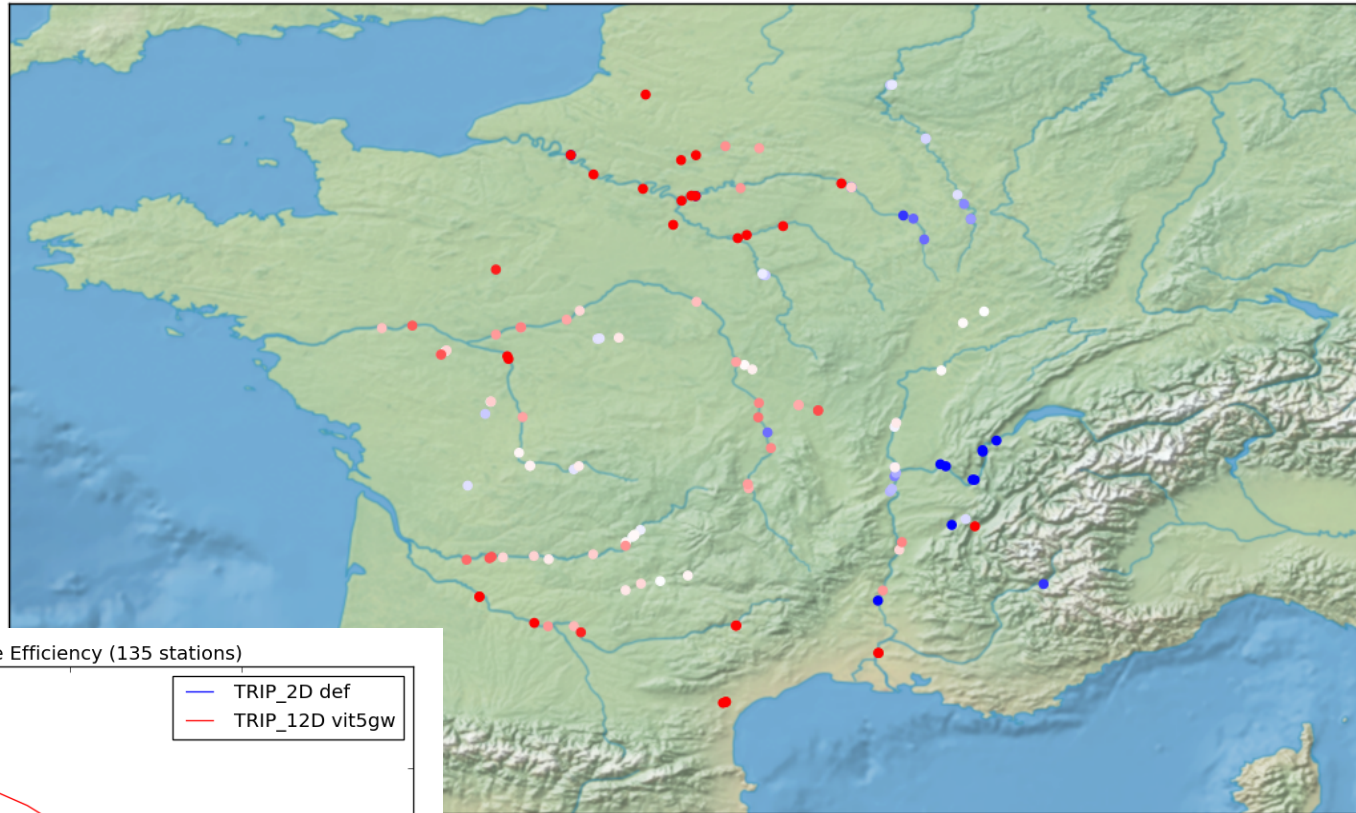


CTRIP-12D over France

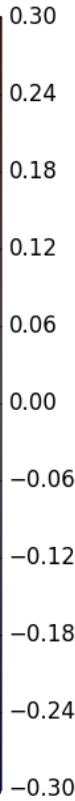


CTRIP-12D: preliminary results

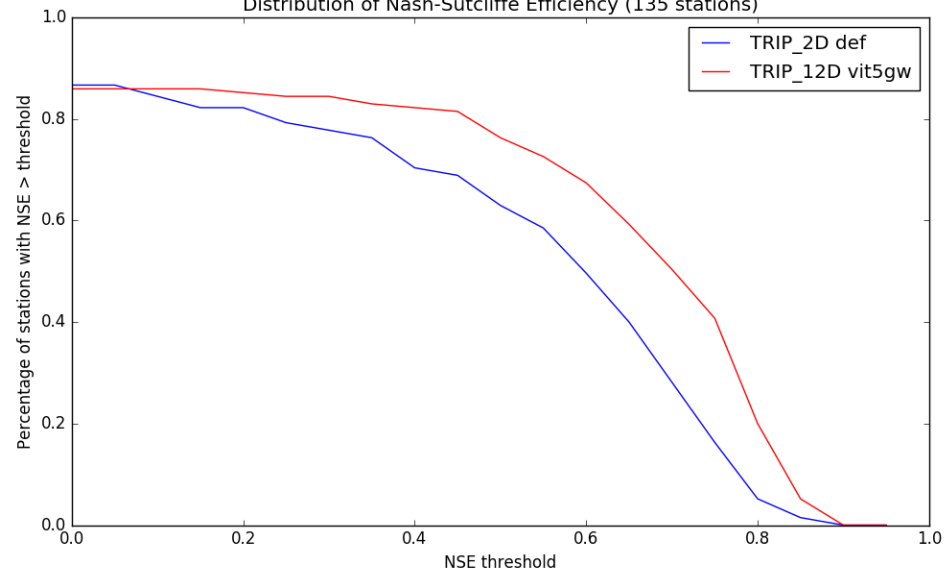
■ CTRIP-12D vs CTRIP-2D: NSE



Nash-Sutcliffe Efficiency



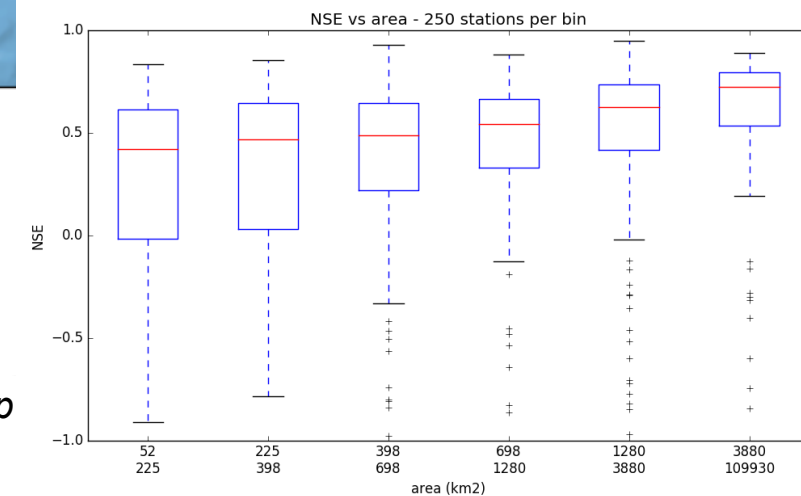
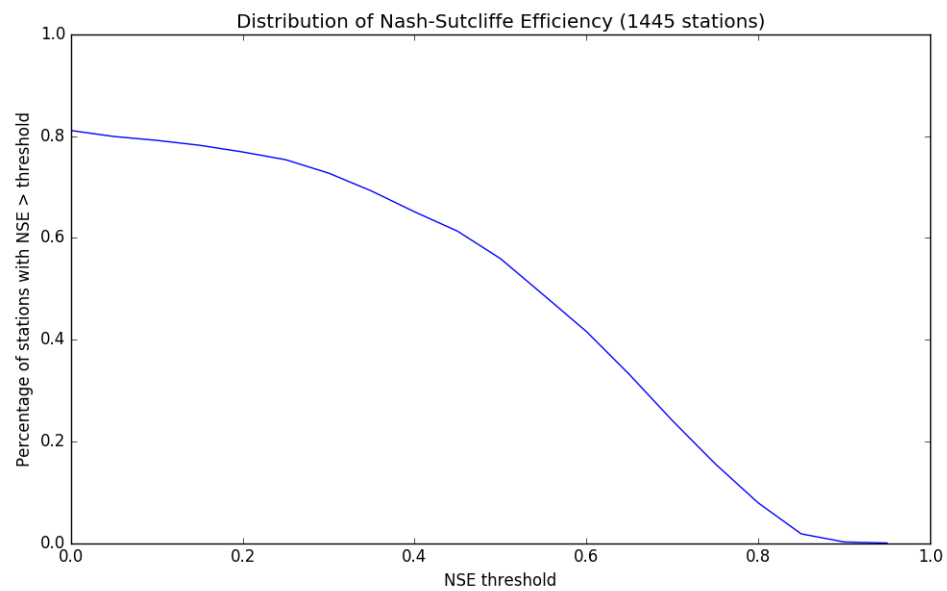
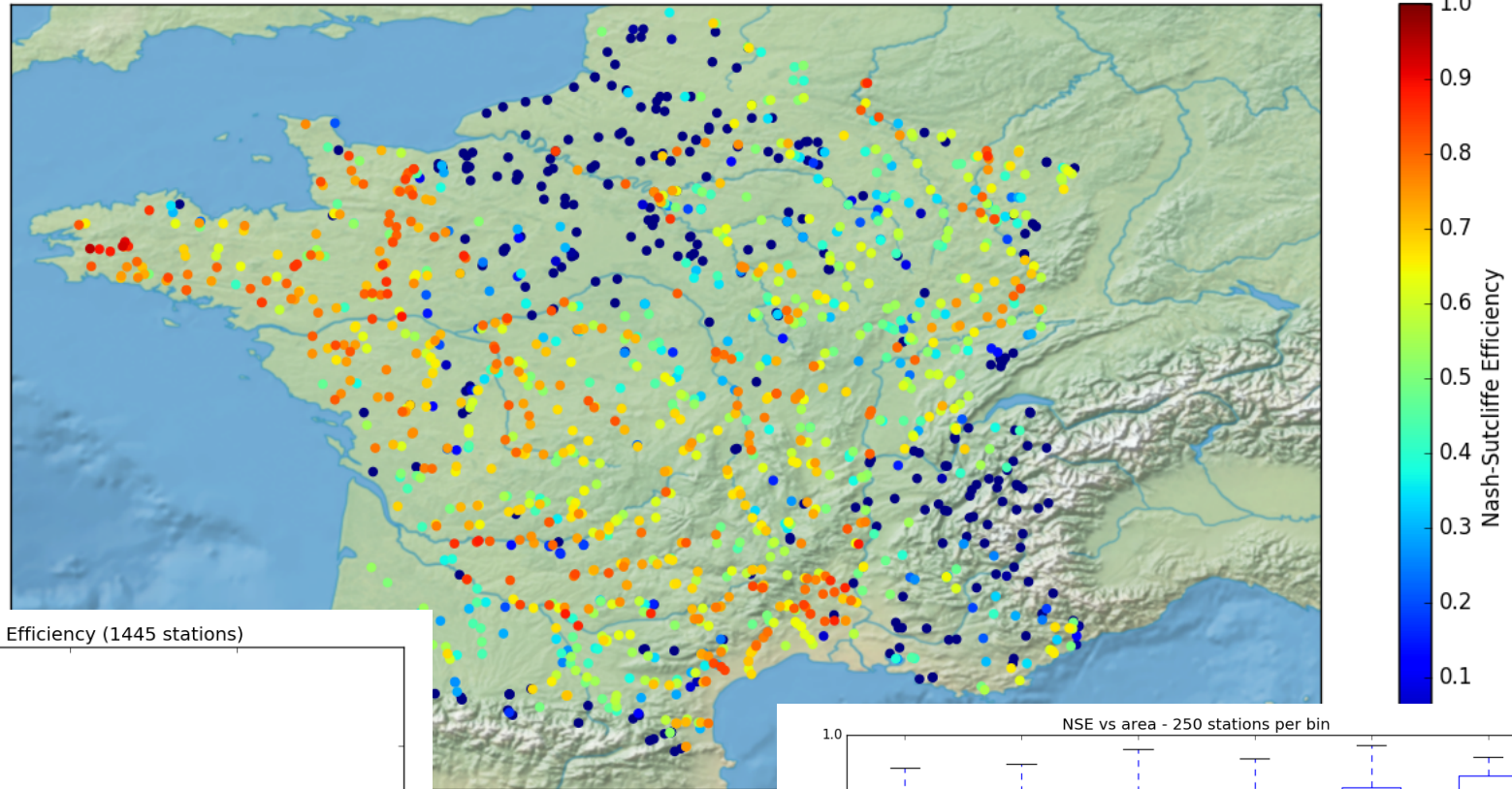
Distribution of Nash-Sutcliffe Efficiency (135 stations)



eting - Bordeaux, 17-20 June 2019

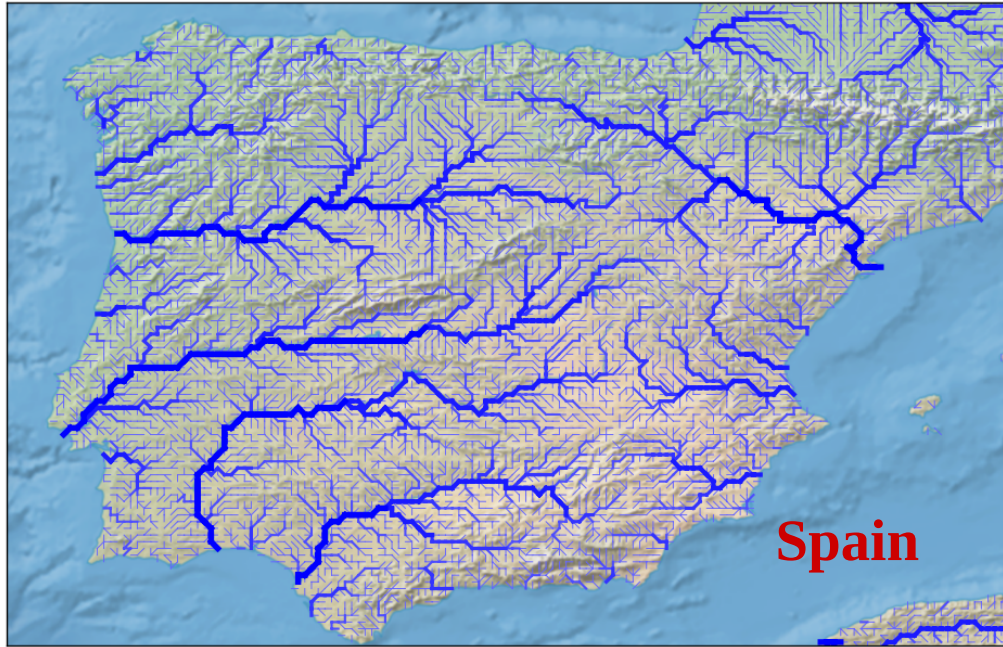
CTRIP-12D: preliminary results

■ CTRIP-12D: NSE



Munier et al., in prep

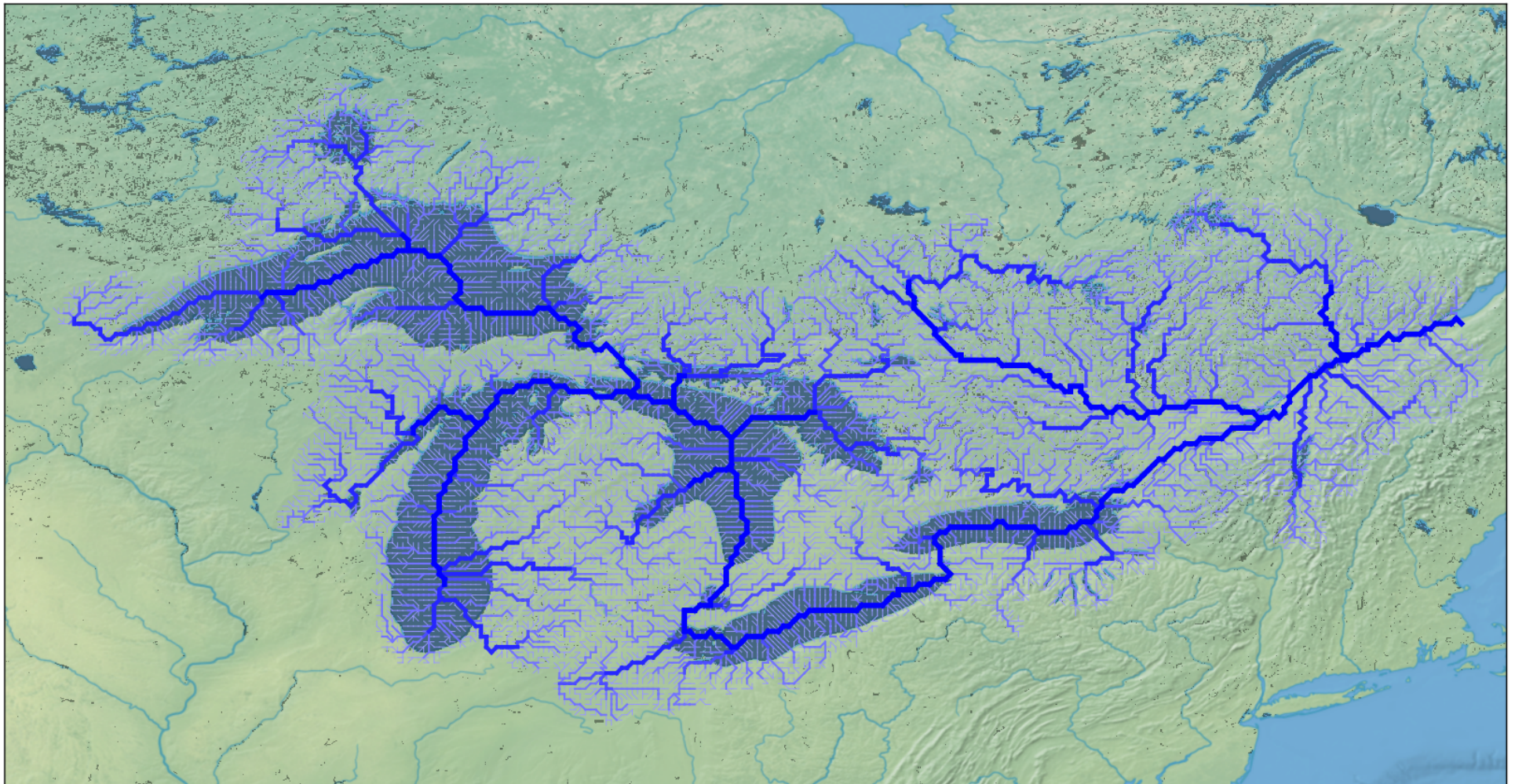
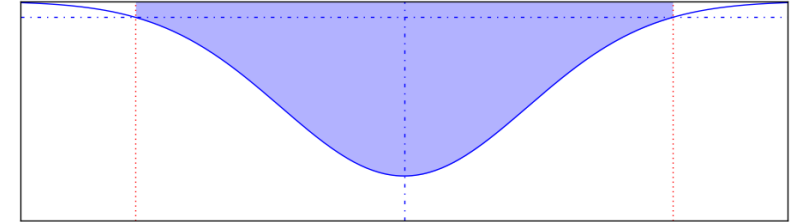
CTRIP-12D: examples



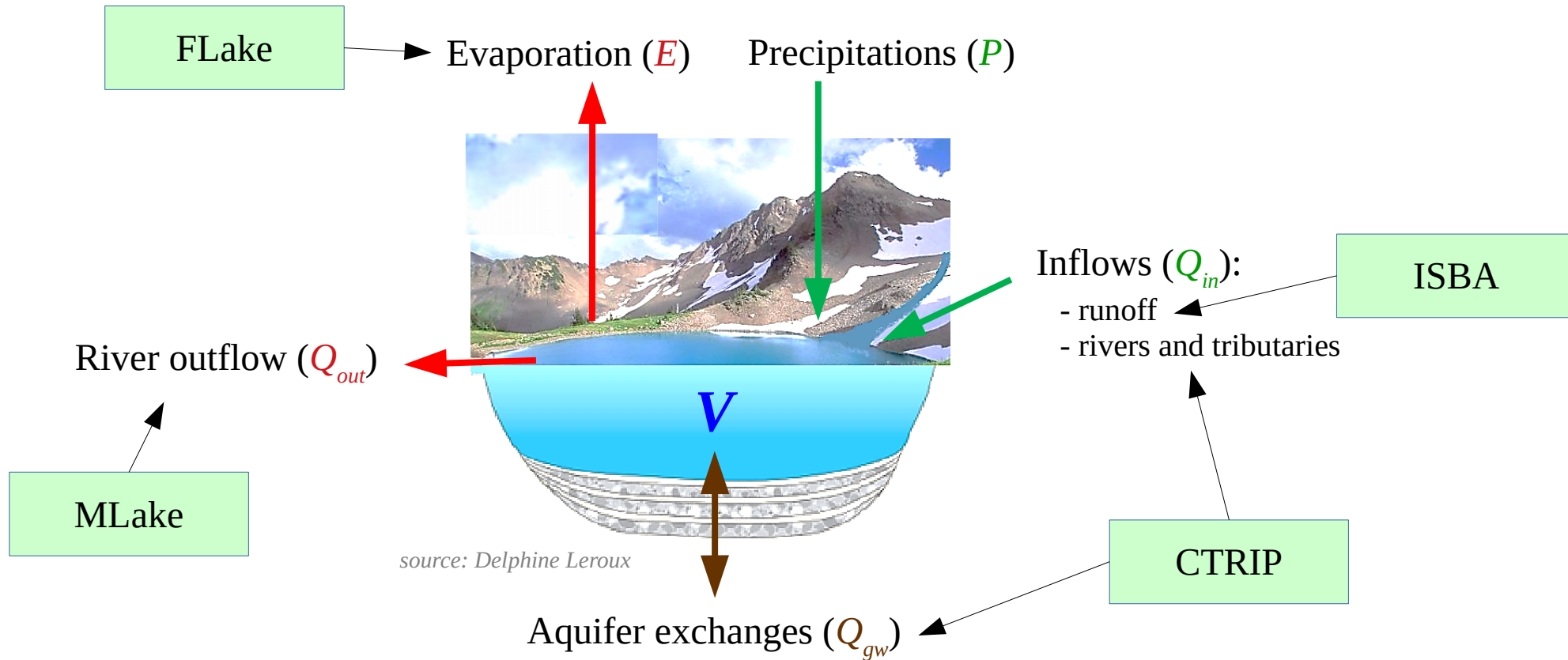
Munier et al., in prep

MLake: Water mass balance in lakes

- Global scale extraction of lakes (localization, area) from ECOCLIMAP-II (1 km resolution)
- Calibration of a Gaussian shape for bathymetry
- Clipping of lake mask over the CTRIP-12D river network



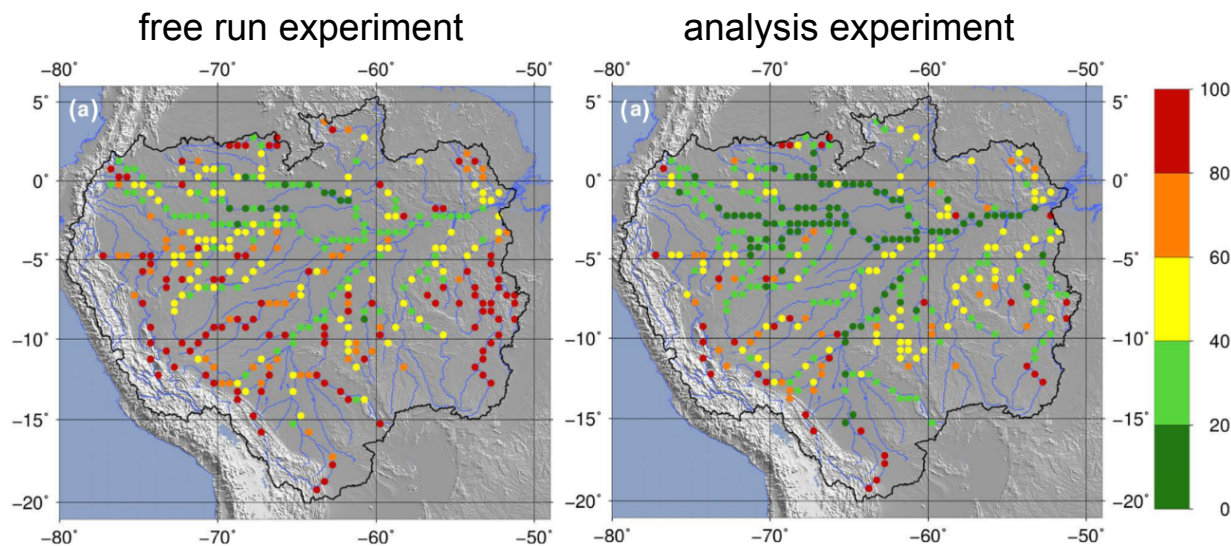
MLake: Water mass balance in lakes



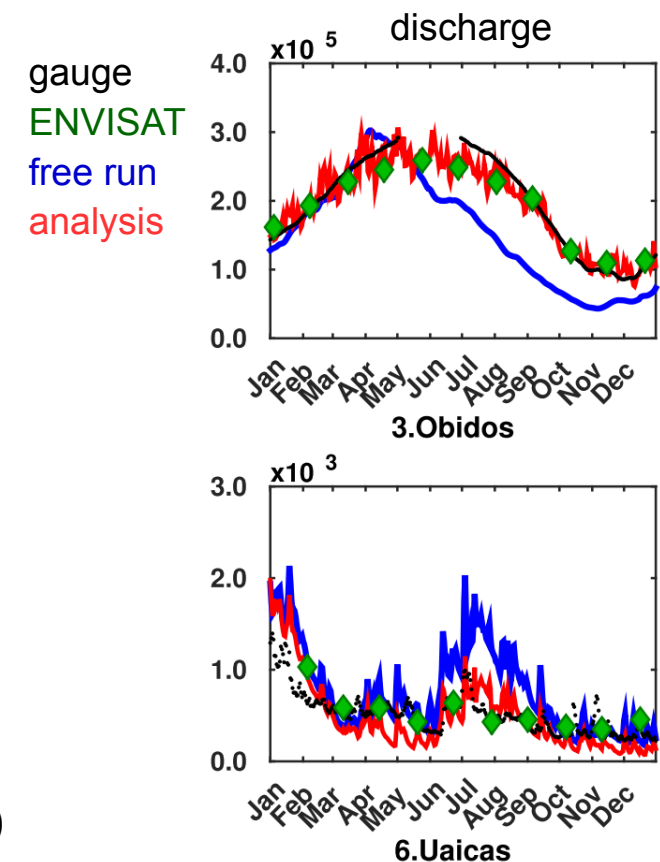
$$\frac{dV}{dt} = (P - E) * A_{lake} + Q_{in} - Q_{out} + Q_{gw}$$

Guinaldo et al., in prep

- Based on previous work by Emery et al. (2018, 2019) over the Amazon basin
Assimilation of ENVISAT observations within CTRIP for parameter estimation or state correction (river storage or discharge)



RMSEn of simulated/analyzed discharge with respect to the ENVISAT



- On-going integration in the SURFEX code (TOSCA project)
 - Freely available from GIT repo
 - Possible extension for case studies over any basin around the world

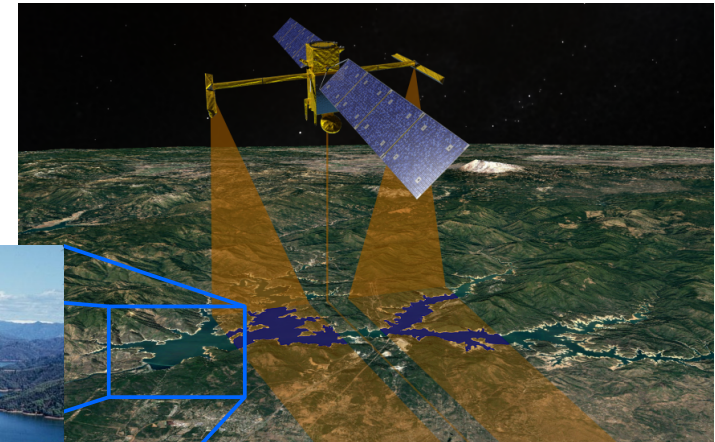
- New PhD starting in October 2019, funded by CNES

Improved river flow modeling with the integration of dams-reservoirs and the use of the future altimetry SWOT mission

Main objective:

Improve our understanding of the impact of anthropization on regional scale water resources

- ▶ New high resolution river network
- ▶ Development of a dam-reservoir model
- ▶ Reservoir management and dam releases
 - Hydropower
 - Irrigation
 - Low-flow sustainability
 - Flood control
- ▶ Assimilation of satellite observations
 - Characterization of reservoirs
 - Model parameter calibration



- Emery, C. M., A. Paris, S. Biancamaria, A. Boone, S. Calmant, P. A. Garambois and J. S. Da Silva (2018). **Large-scale hydrological model river storage and discharge correction using a satellite altimetry-based discharge product.** *Hydrology and Earth System Sciences*, 22(4), 2135–2162.
- Emery, C. M., S. Biancamaria, A. Boone, S. Ricci, M. Rochoux M. and V. Pedinotti (2019). **Correction of large-scale river routing model parameters using SWOT observations.** *Hydrology and Earth System Sciences*, submitted.
- Emery, C. M., A. Paris, S. Biancamaria, A. Boone, S. Calmant, P.-A. Garambois, J. Santos de Silva and C. David (2019). **Discharge estimation via assimilation of multi-satellite-based discharge products: case study over the Amazon basin.** *IEEE Geosci. and Remote Sens. Letters*, submitted.
- Häfliger, V., E. Martin, A. Boone, S. Ricci, and S. Biancamaria (2019). **Assimilation of Synthetic SWOT River Depths in a Regional Hydrometeorological Model.** *Water*, 11(1), 78.
- Guinaldo, T. et al. (2019). **MLake: a water mass balance model for the representation of lake dynamics within the SURFEX modeling platform.** *In prep.*
- Munier, S. et al. (2019). **Increasing the spatial resolution of the CTRIP routing model: hydrological impacts over France.** *In prep.*