

# SWOT CalVal in Braided Rivers: 1 Day Repeat Orbit

Tamlin Pavelsky, Taylor Rowley, Camryn Kluetmeier  
SWOT CalVal Team



University of  
Massachusetts  
Amherst



THE UNIVERSITY  
of NORTH CAROLINA  
at CHAPEL HILL



University of Colorado  
Boulder



BROWN

# Why Braided Rivers?

- Multichannel rivers constitute ~49% of rivers globally (Wang et al., 2022)
- Presence of numerous exposed sand/gravel bars present possible challenges for SWOT water detection.
- Multichannel environments present challenging conditions for vector representation of rivers.
- Rapidly changing braidplain morphology may affect SWOT multitemporal data.



University of  
Massachusetts  
Amherst



THE UNIVERSITY  
of NORTH CAROLINA  
at CHAPEL HILL



University of Colorado  
Boulder



BROWN

# Braided River Validation in the SWOT 1-day Orbit

- Waimakariri River, New Zealand
- Sagavanirktok River, Alaska
- Yukon & Porcupine Rivers, Alaska
- Paraná River, South America
- Additional discussion of braided rivers in later talk on science orbit validation led by T. Rowley.



University of  
Massachusetts  
Amherst



THE UNIVERSITY  
of NORTH CAROLINA  
at CHAPEL HILL



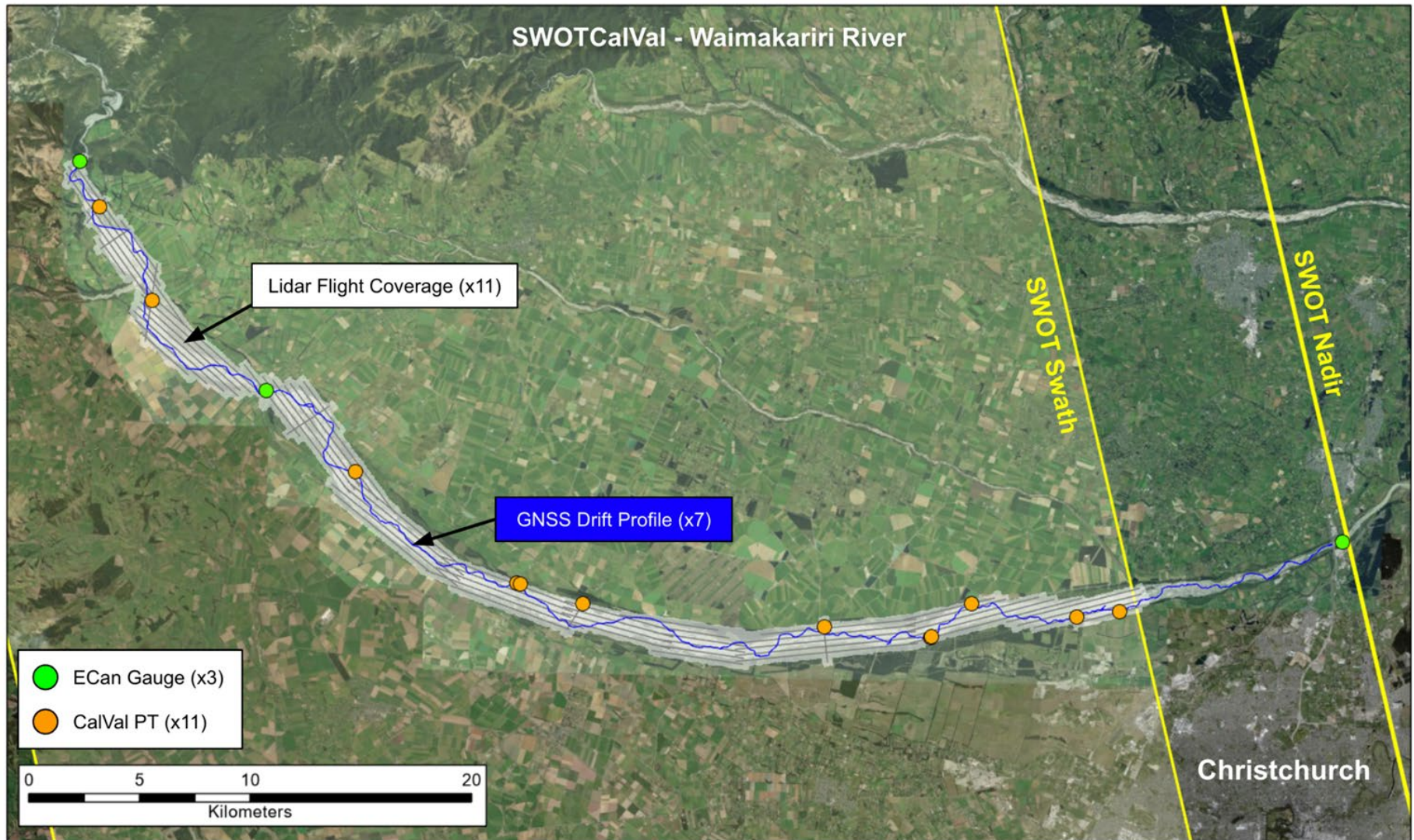
University of Colorado  
Boulder



BROWN



# Waimakariri River, New Zealand



University of  
Massachusetts  
Amherst



THE UNIVERSITY  
of NORTH CAROLINA  
at CHAPEL HILL



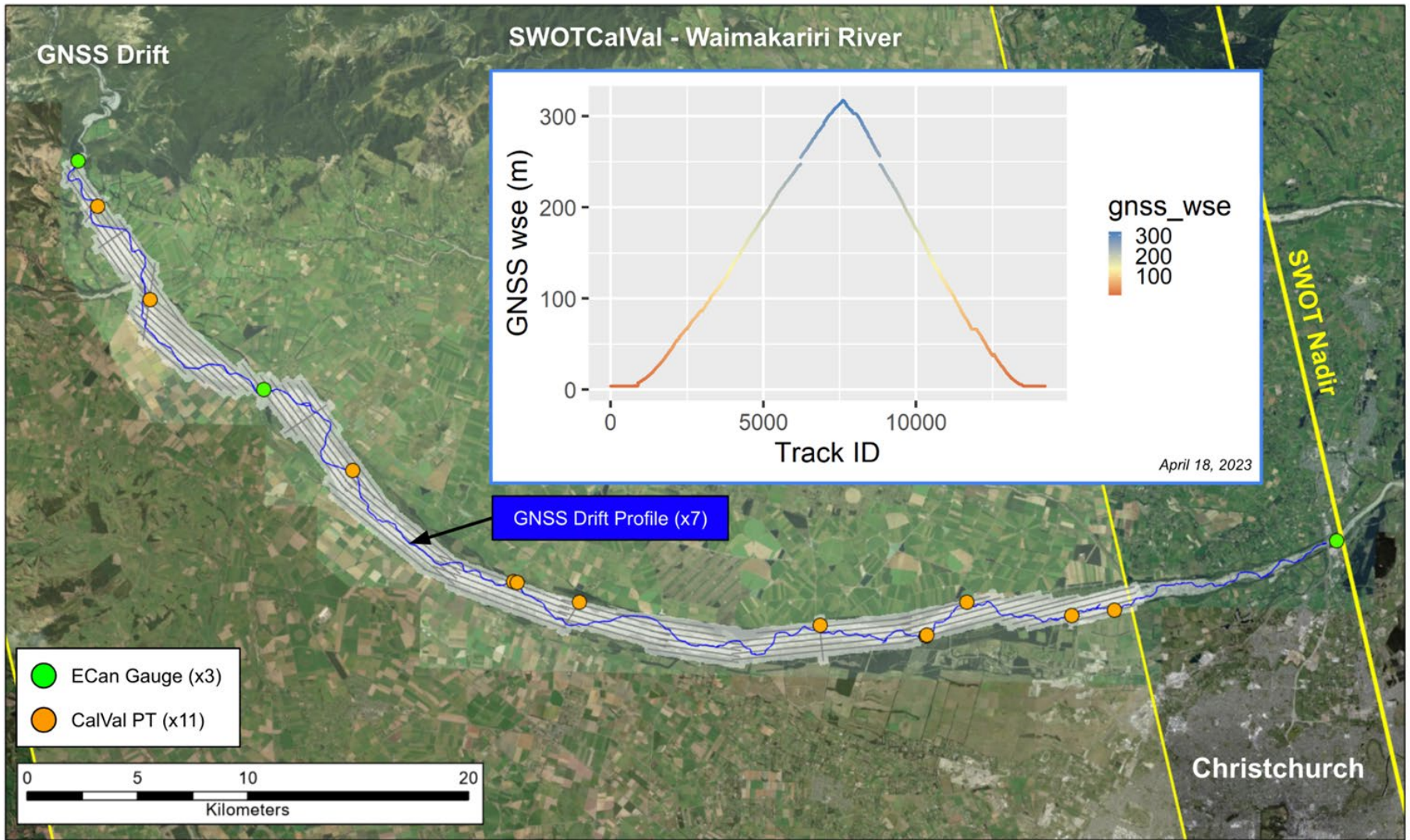
University of Colorado  
Boulder



BROWN



# Waimakariri River, New Zealand



University of  
Massachusetts  
Amherst



THE UNIVERSITY  
of NORTH CAROLINA  
at CHAPEL HILL



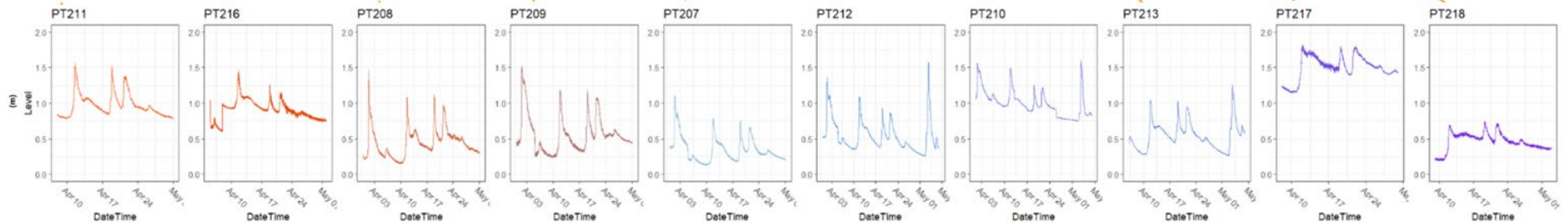
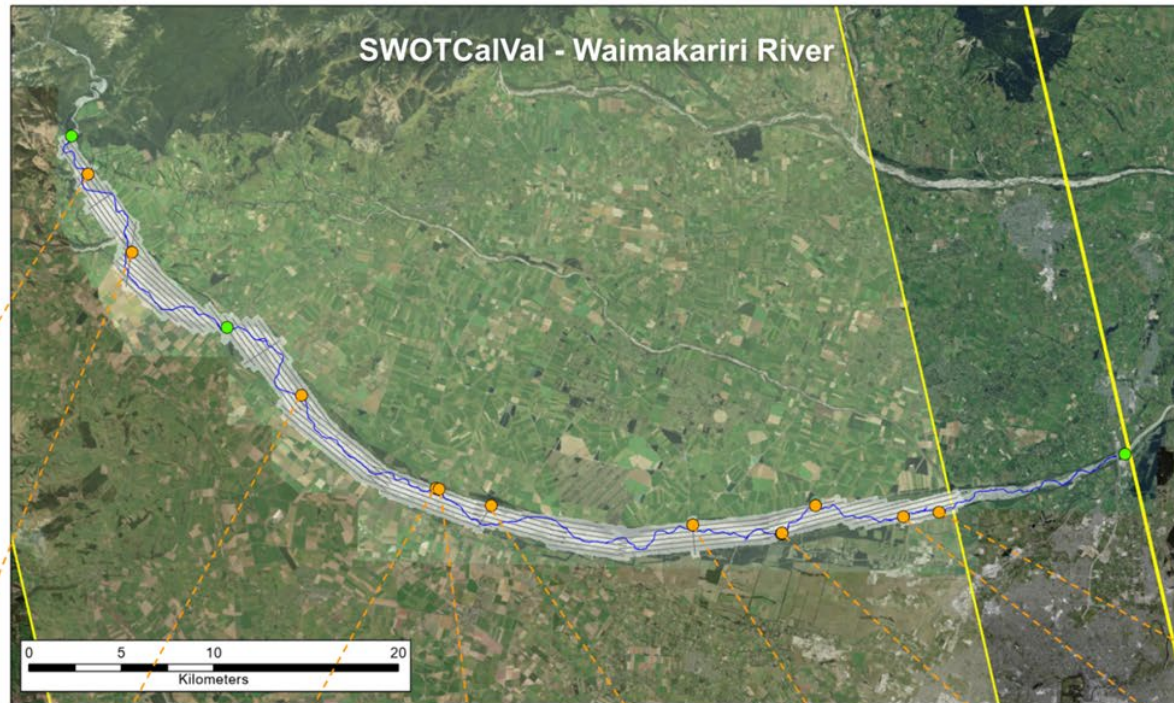
University of Colorado  
Boulder



BROWN



# Waimakariri River, New Zealand



University of  
Massachusetts  
Amherst



THE UNIVERSITY  
of NORTH CAROLINA  
at CHAPEL HILL



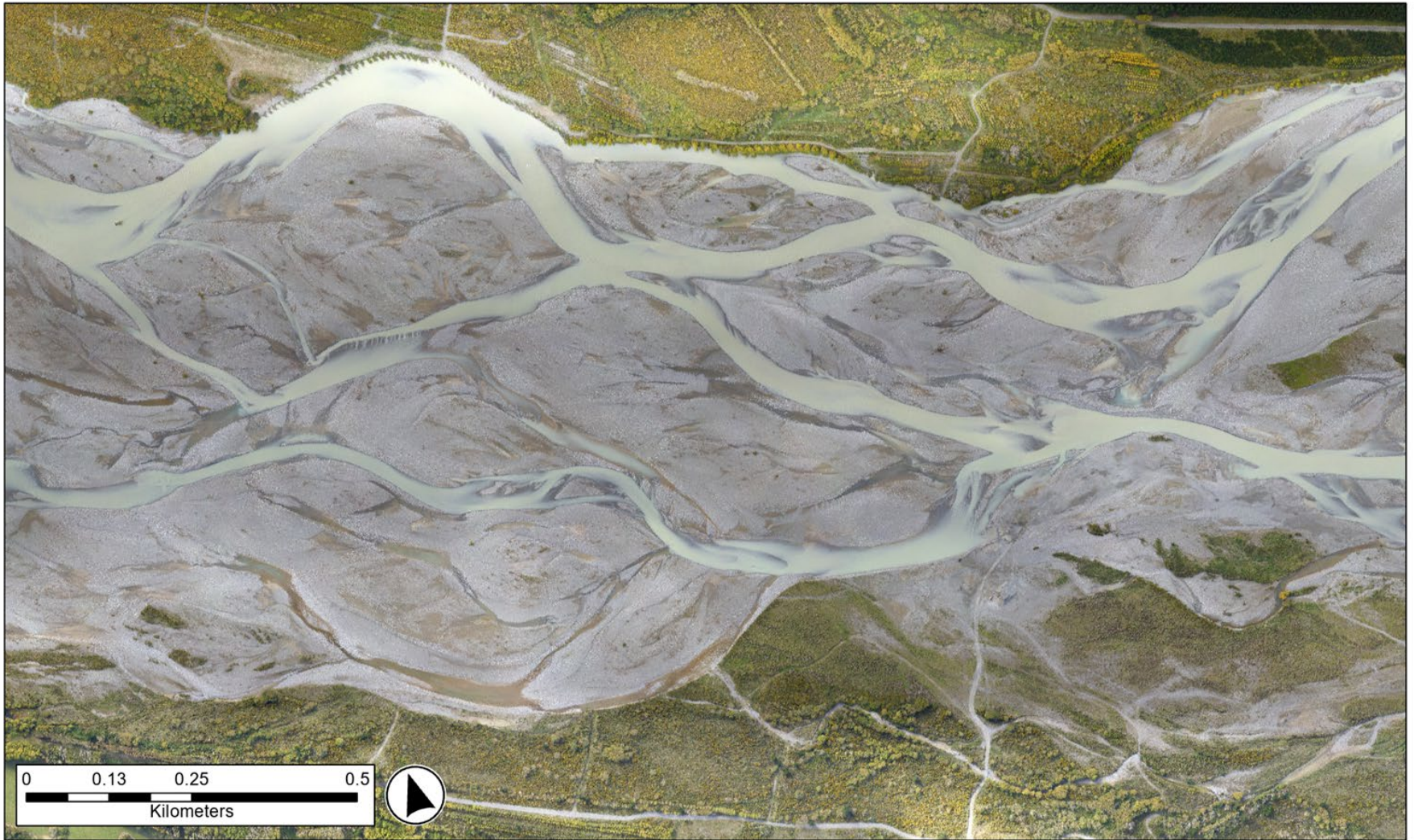
University of Colorado  
Boulder



BROWN



# Waimakariri River, New Zealand



University of  
Massachusetts  
Amherst



THE UNIVERSITY  
of NORTH CAROLINA  
at CHAPEL HILL

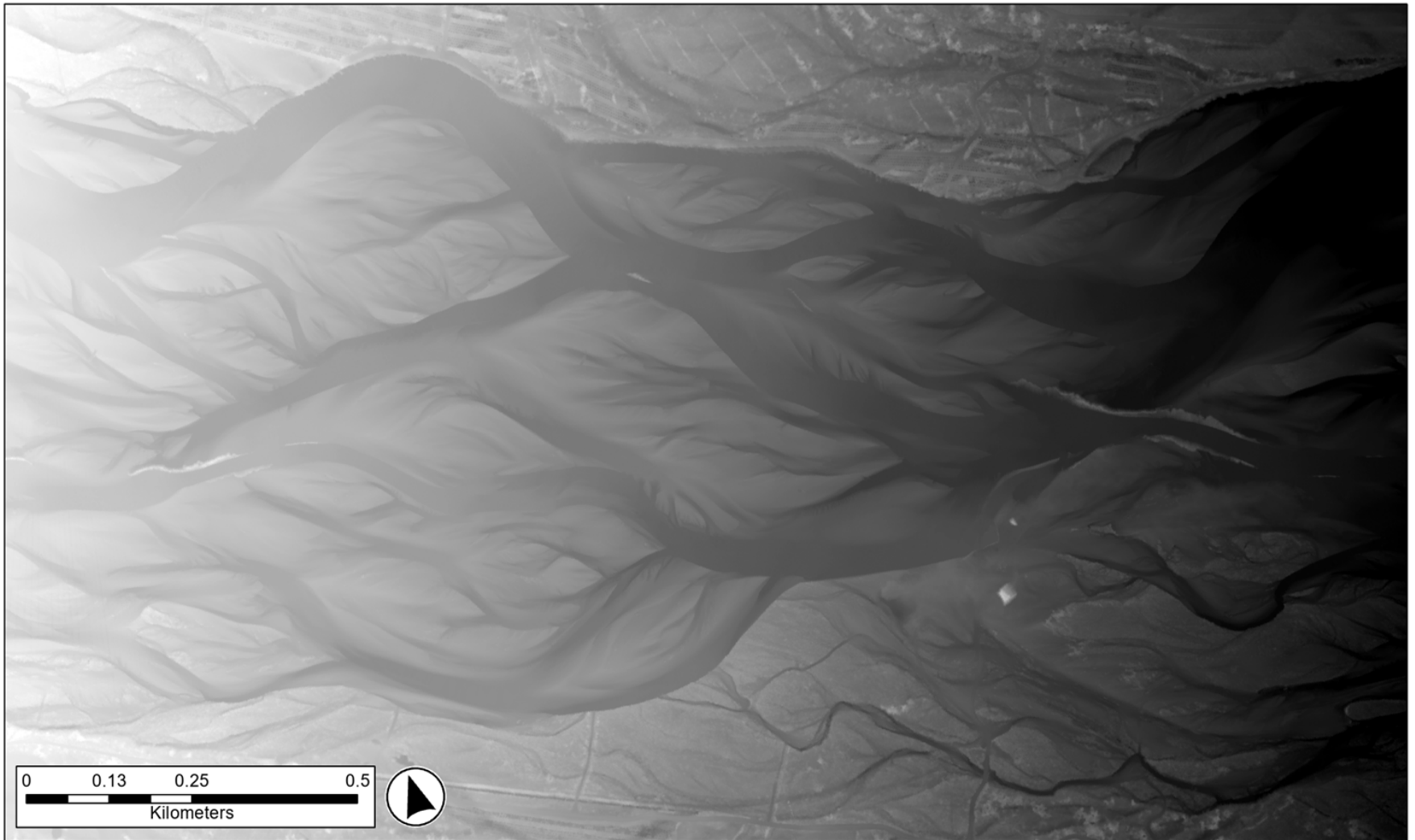


University of Colorado  
Boulder



BROWN

# Waimakariri River, New Zealand



University of  
Massachusetts  
Amherst



THE UNIVERSITY  
of NORTH CAROLINA  
at CHAPEL HILL



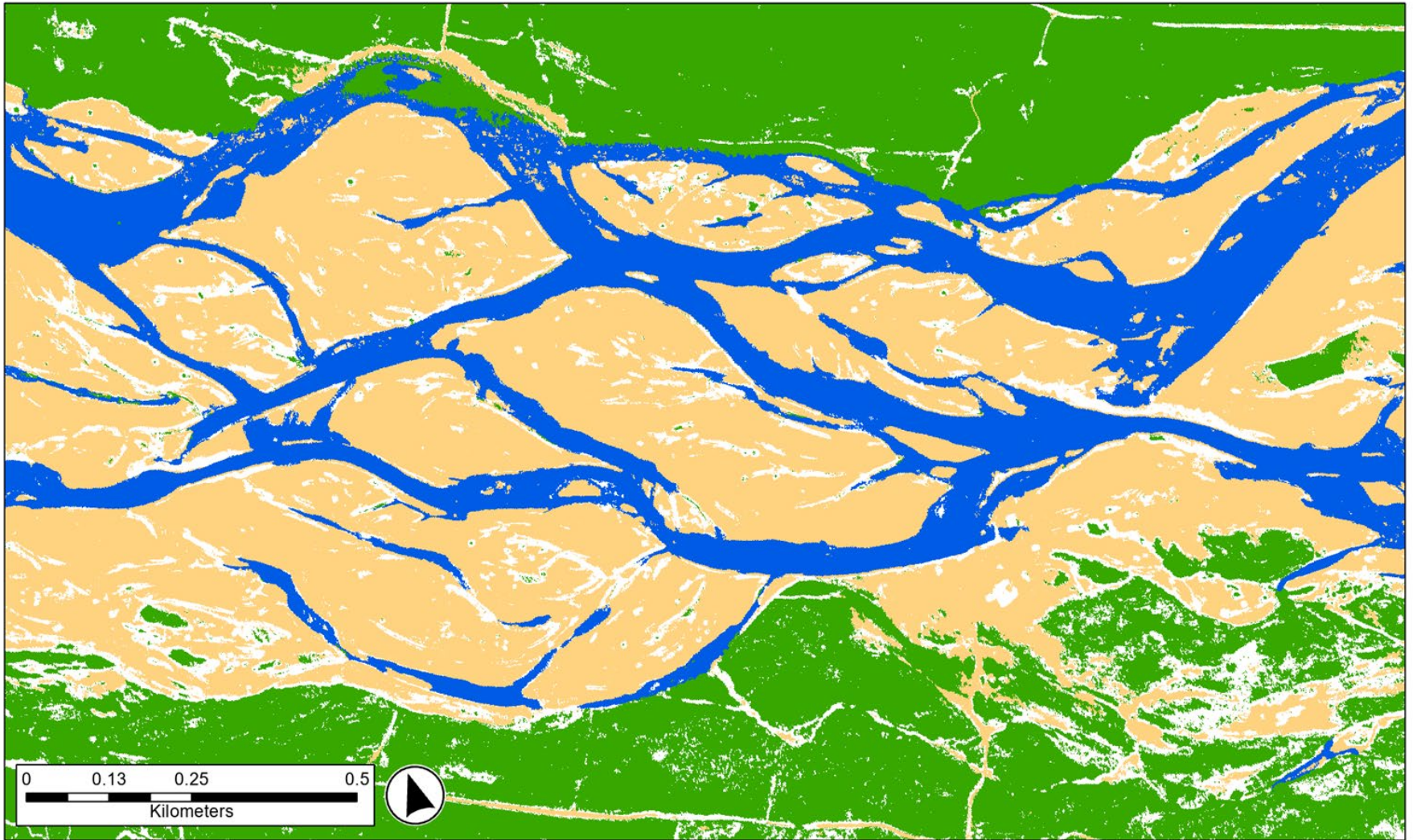
University of Colorado  
Boulder



BROWN



# Waimakariri River, New Zealand



University of  
Massachusetts  
Amherst



THE UNIVERSITY  
of NORTH CAROLINA  
at CHAPEL HILL



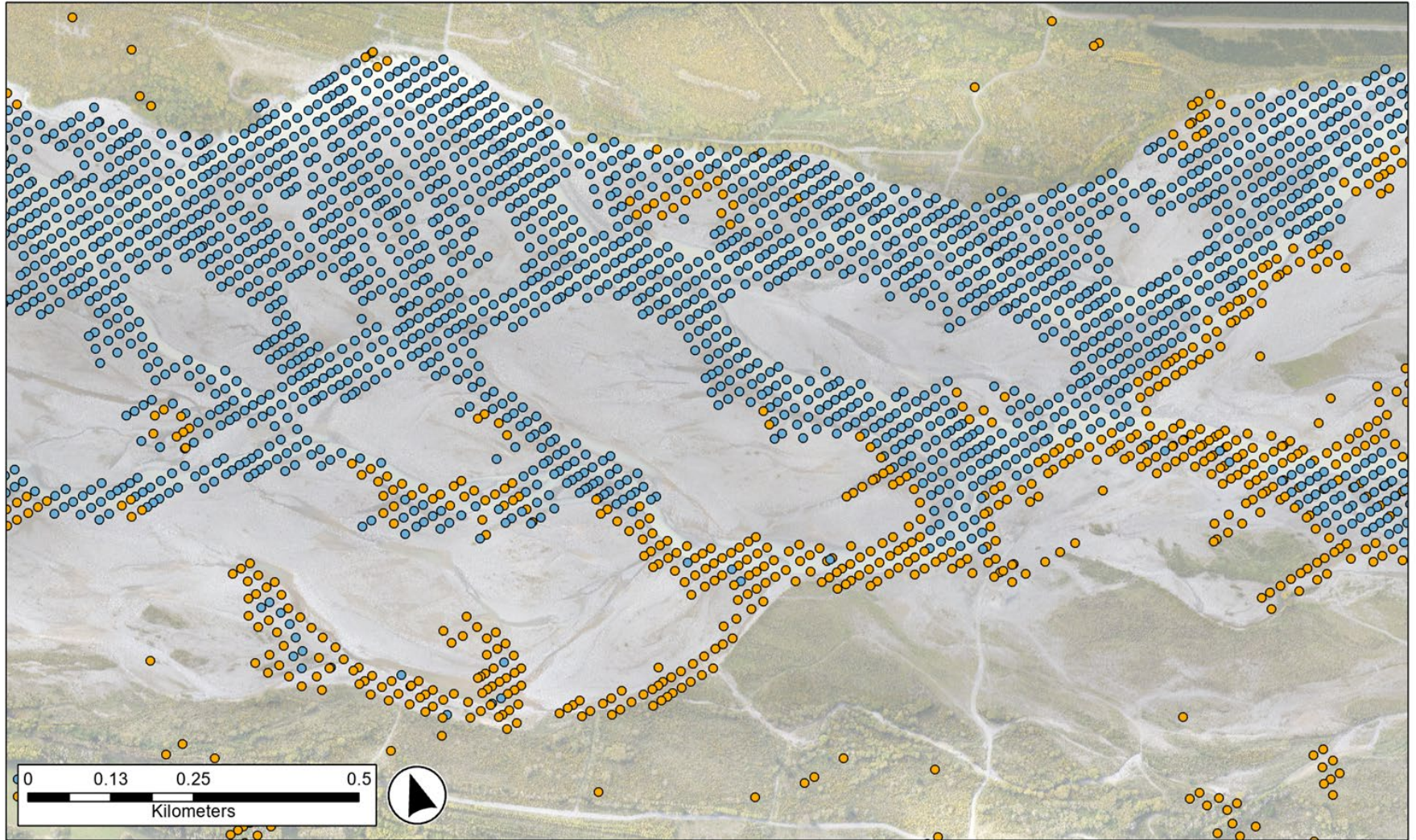
University of Colorado  
Boulder



BROWN



# Waimakariri River, New Zealand



University of  
Massachusetts  
Amherst



THE UNIVERSITY  
of NORTH CAROLINA  
at CHAPEL HILL



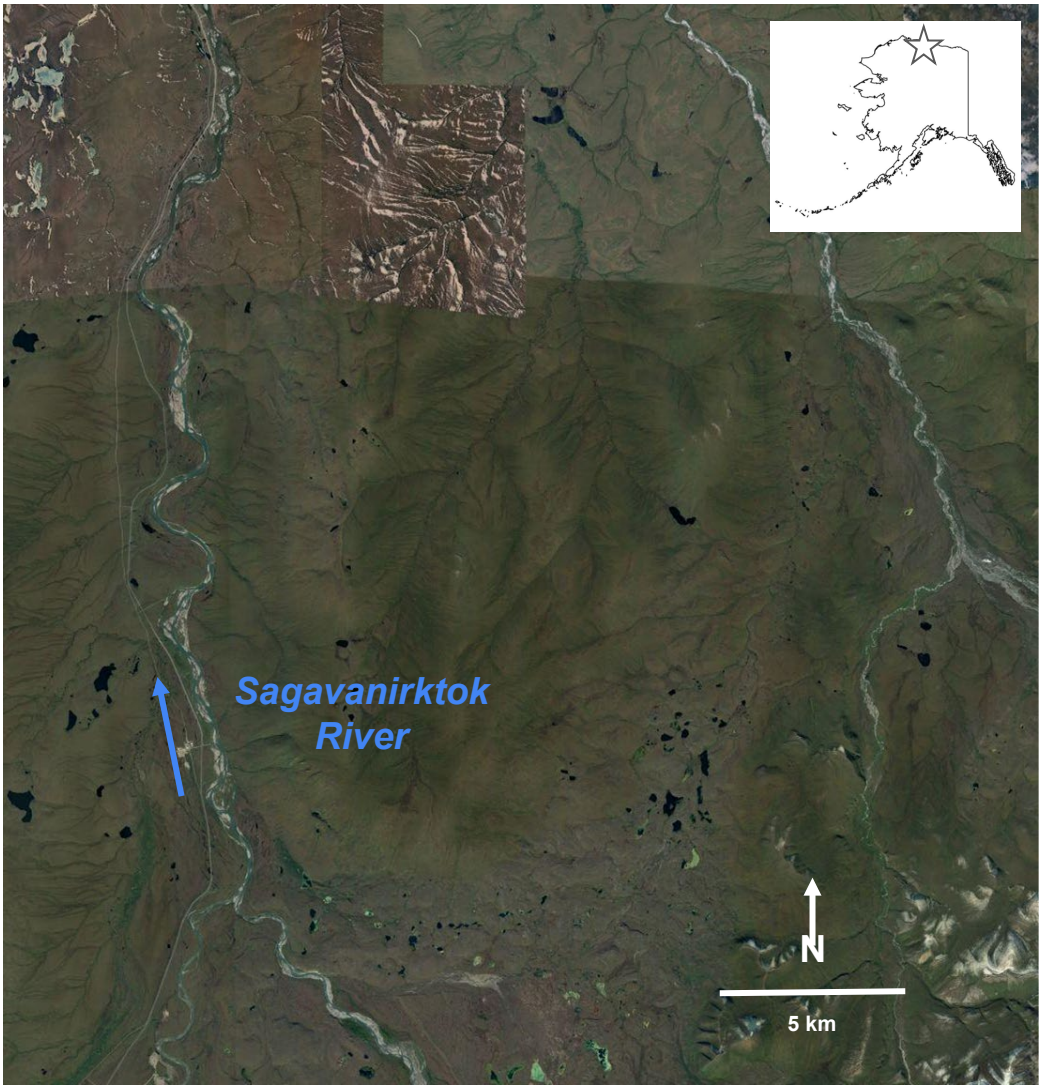
University of Colorado  
Boulder



BROWN

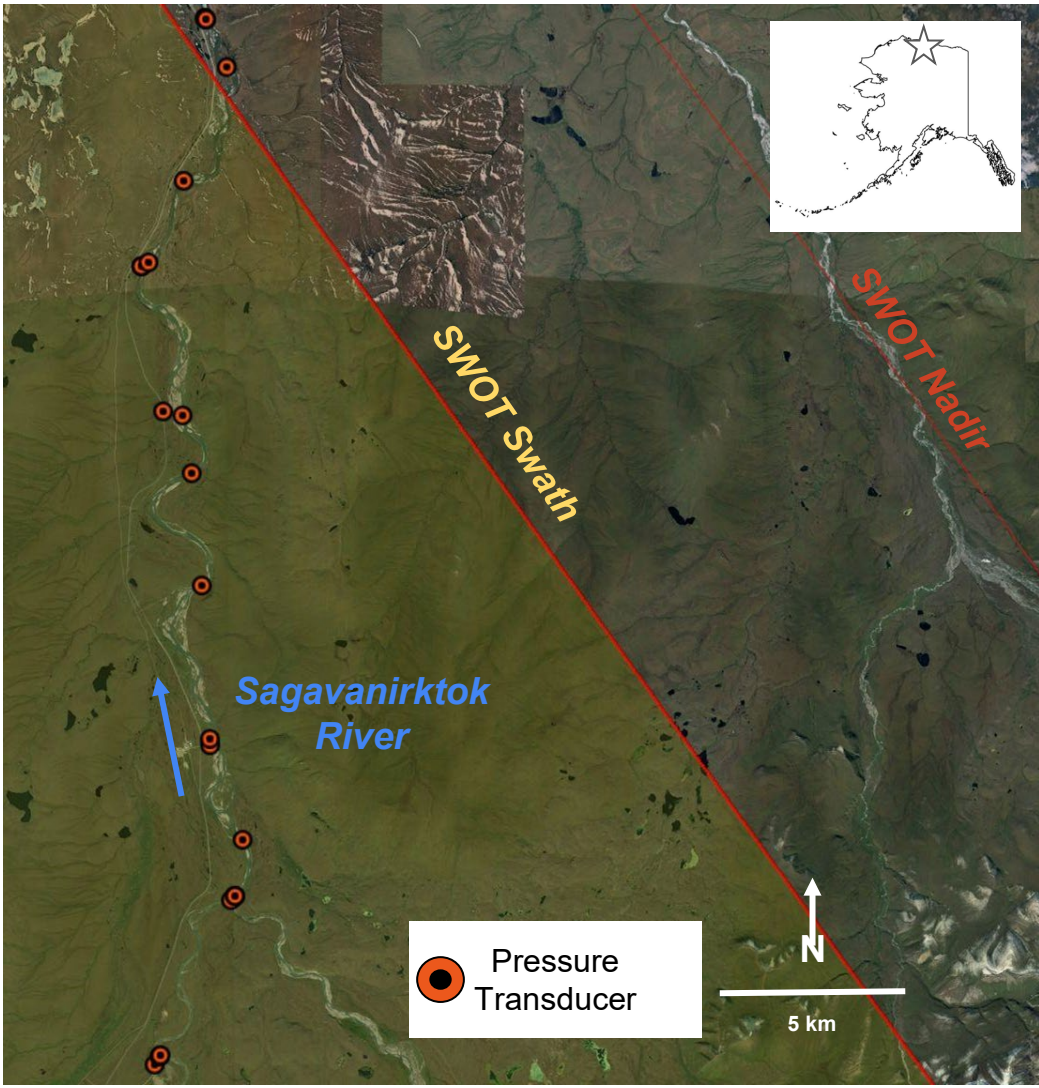


# Sagavanirktok River



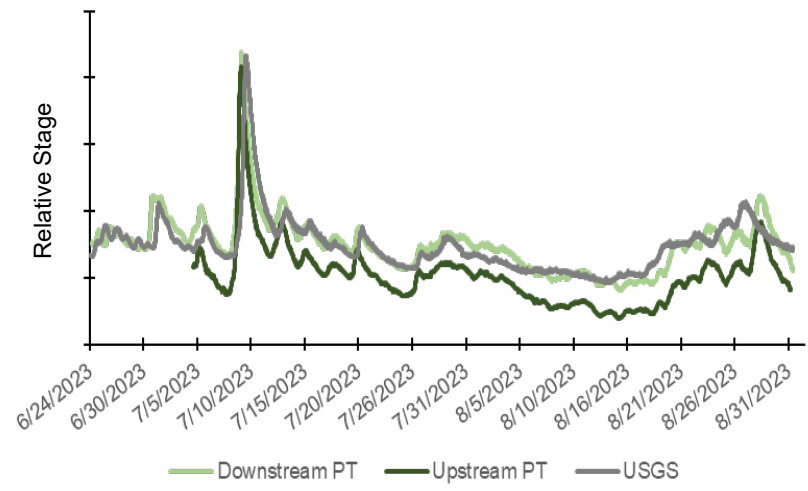
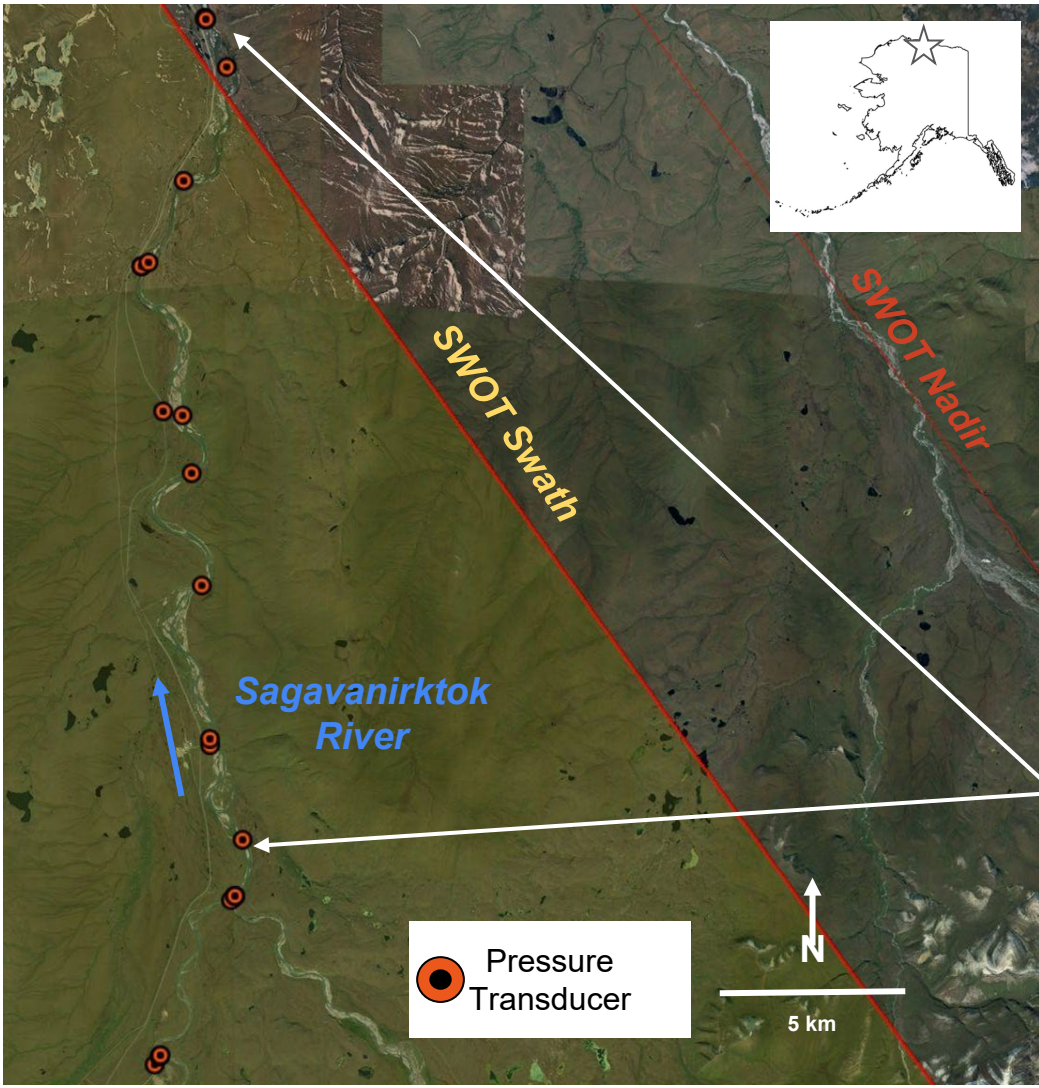


# Sagavanirktok River



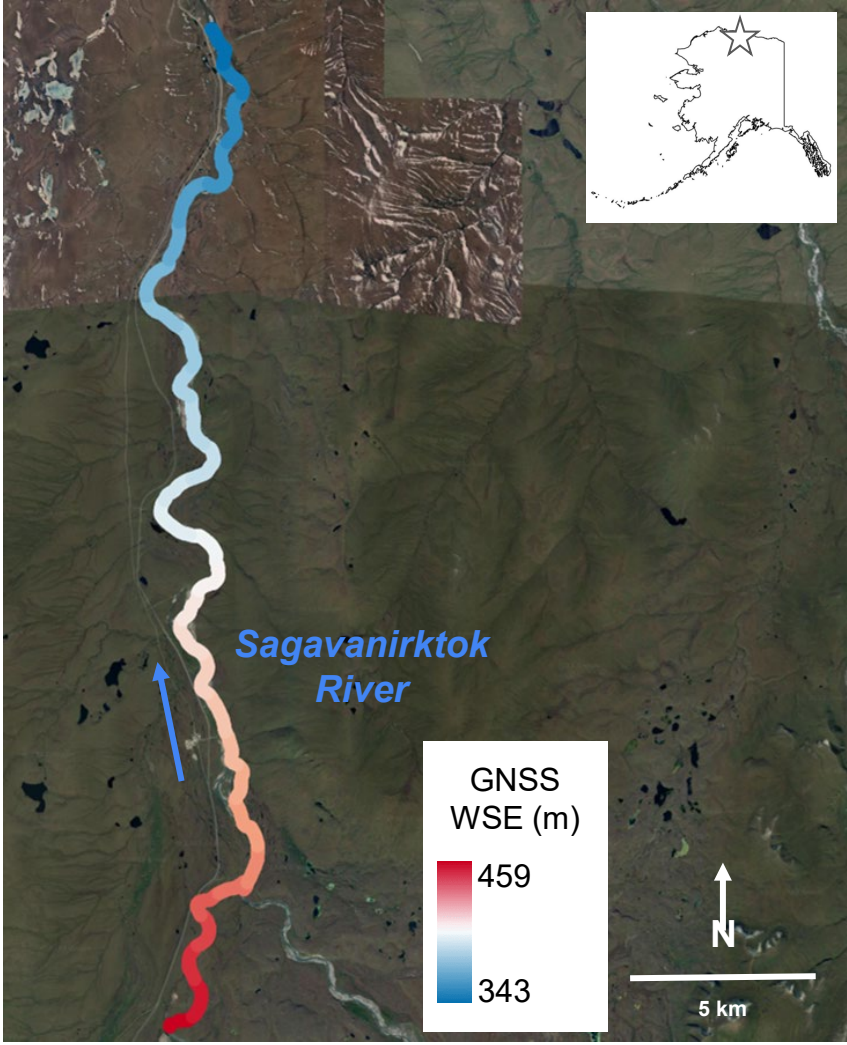


# Sagavanirktok River





# Sagavanirktok River

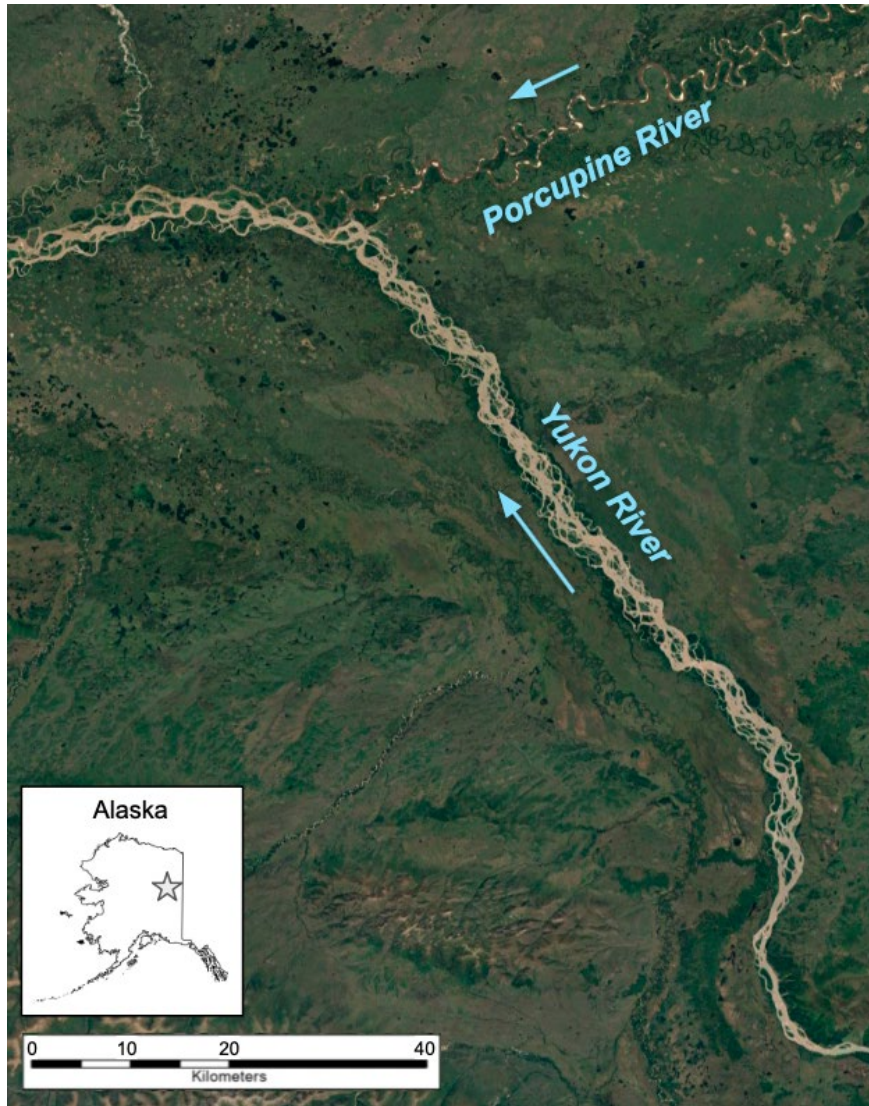


**June 24 - July 10**

- 17 days of PT data
- 12 coincident drifts
- 4 SWORD reaches (~40 km)



# Yukon & Porcupine Rivers, Alaska



University of  
Massachusetts  
Amherst



THE UNIVERSITY  
of NORTH CAROLINA  
at CHAPEL HILL



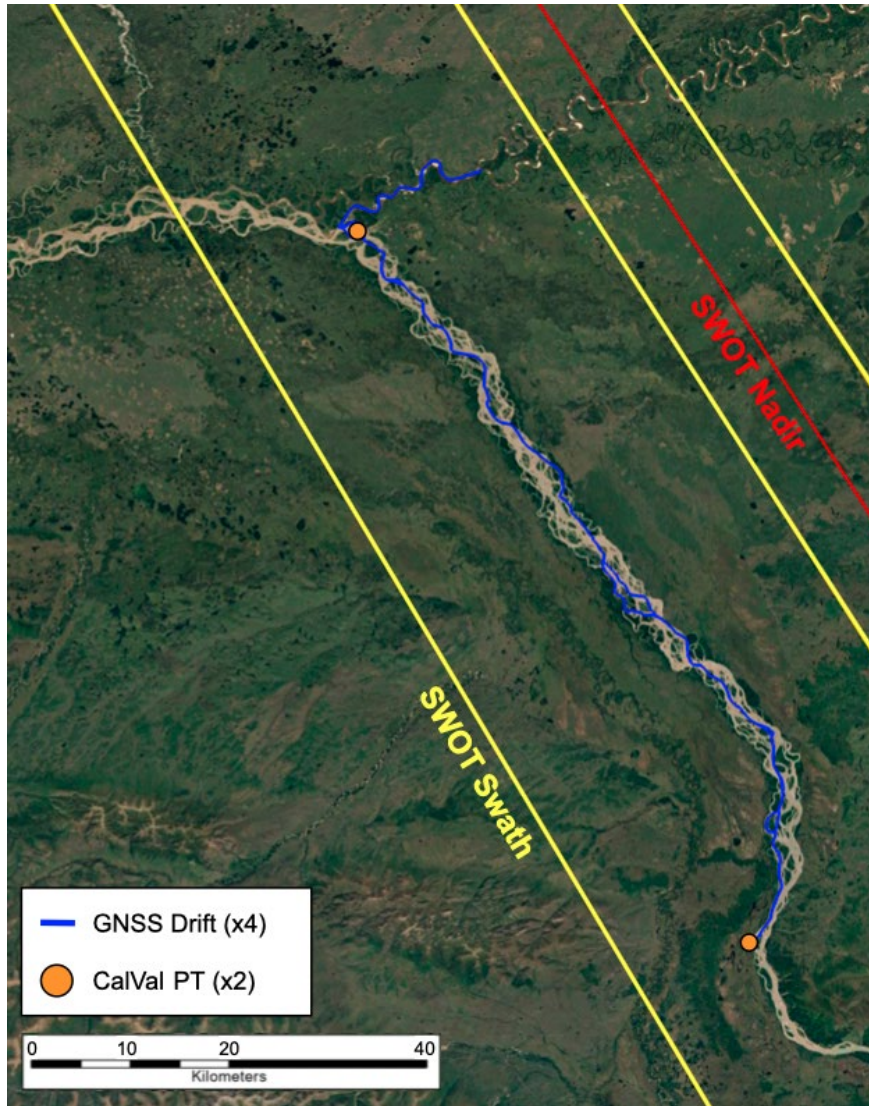
University of Colorado  
Boulder



BROWN



# Yukon & Porcupine Rivers, Alaska



University of  
Massachusetts  
Amherst



THE UNIVERSITY  
of NORTH CAROLINA  
at CHAPEL HILL



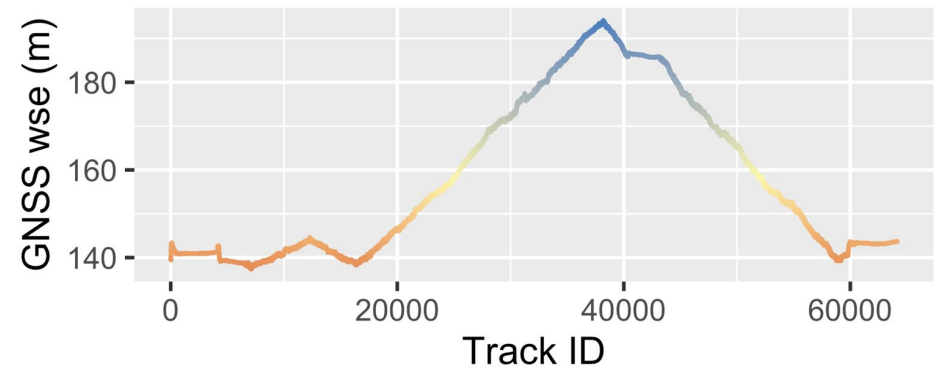
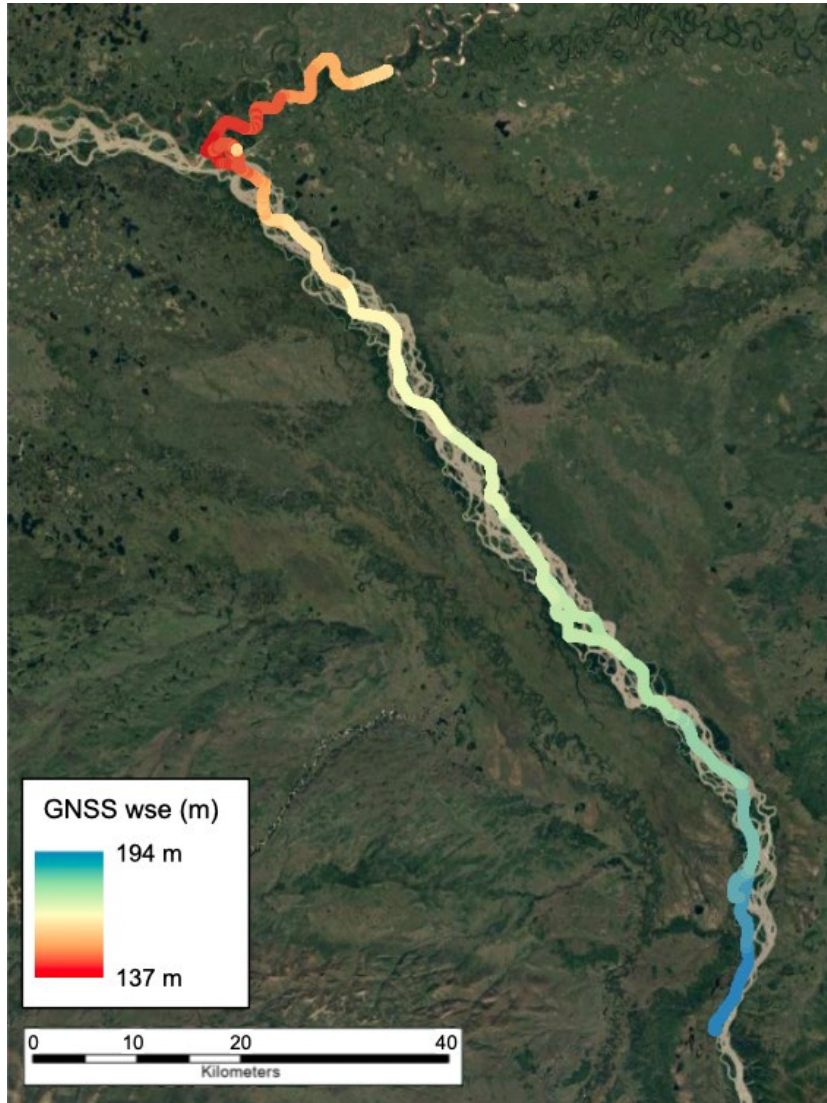
University of Colorado  
Boulder



BROWN



# Yukon & Porcupine Rivers, Alaska



University of  
Massachusetts  
Amherst



THE UNIVERSITY  
of NORTH CAROLINA  
at CHAPEL HILL



University of Colorado  
Boulder



BROWN