

# SWOT Validation in North American Boreal Lakes

Tamlin Pavelsky, Taylor Rowley, Camryn Kluetmeier  
SWOT Cal/Val Team



University of  
Massachusetts  
Amherst



THE UNIVERSITY  
of NORTH CAROLINA  
at CHAPEL HILL



University of Colorado  
Boulder



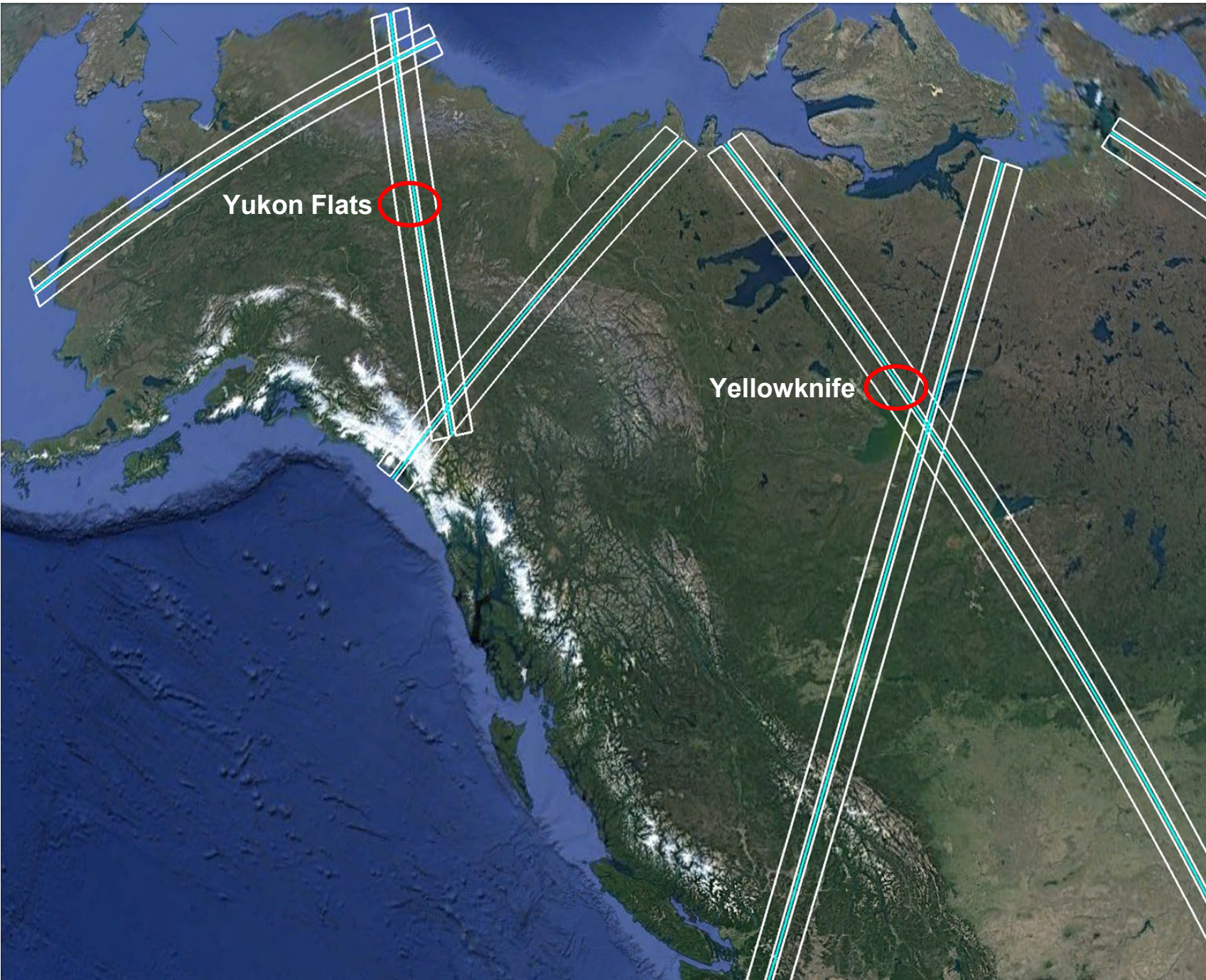
BROWN

# Why Boreal Lakes?

- Most lakes globally are north of 50 N
- Two key types of boreal lakes:
  - Wetland lakes in permafrost-affected areas
  - Canadian Shield lakes
- Boreal lakes affected by ice for much of the year





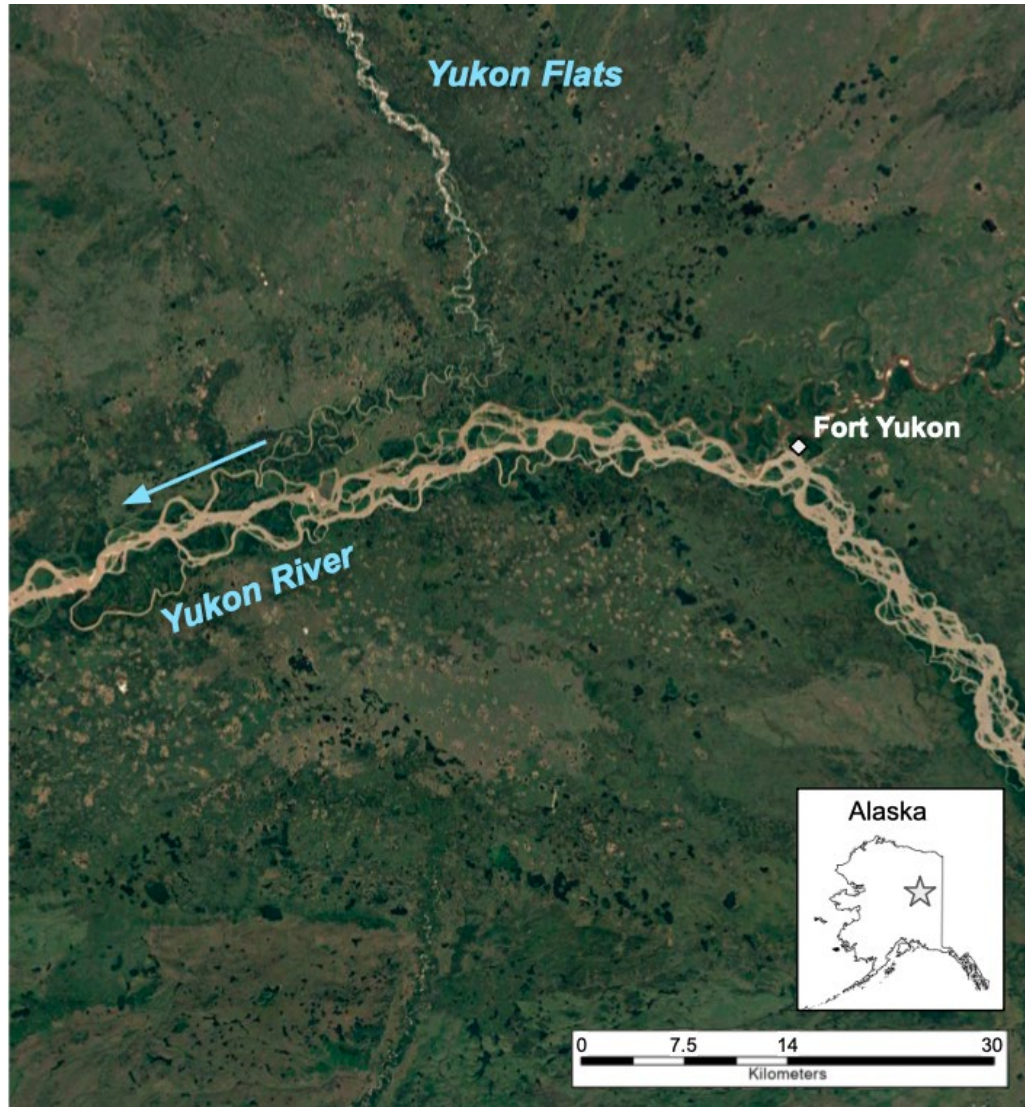


Yukon Flats

Yellowknife



# Yukon Flats, Alaska



University of  
Massachusetts  
Amherst



THE UNIVERSITY  
of NORTH CAROLINA  
at CHAPEL HILL



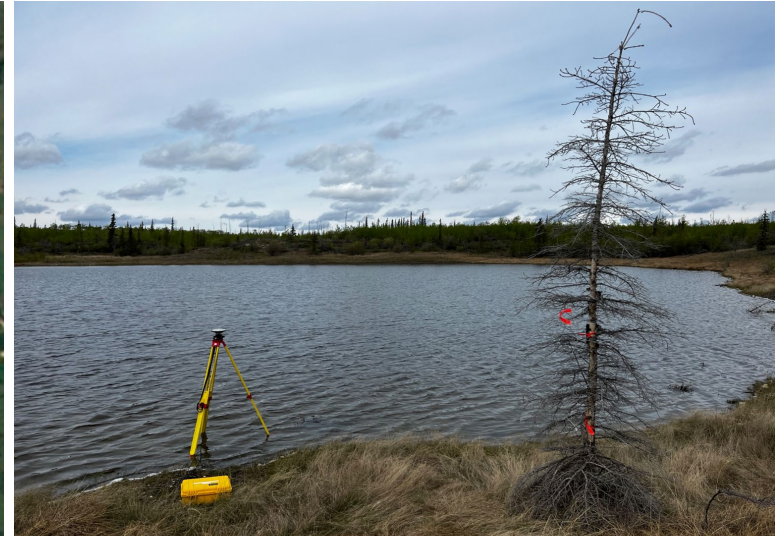
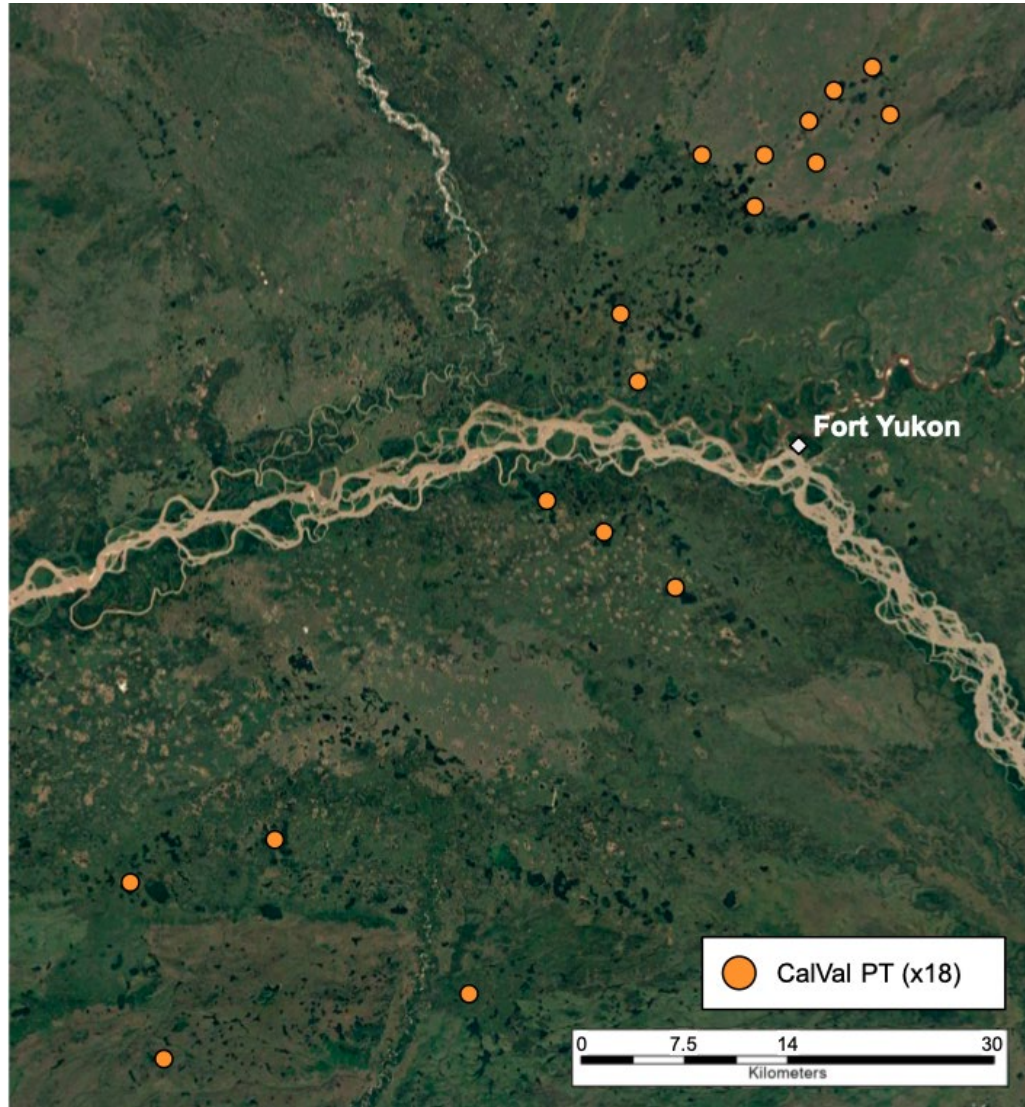
University of Colorado  
Boulder



BROWN



# Yukon Flats, Alaska



University of  
Massachusetts  
Amherst



THE UNIVERSITY  
of NORTH CAROLINA  
at CHAPEL HILL



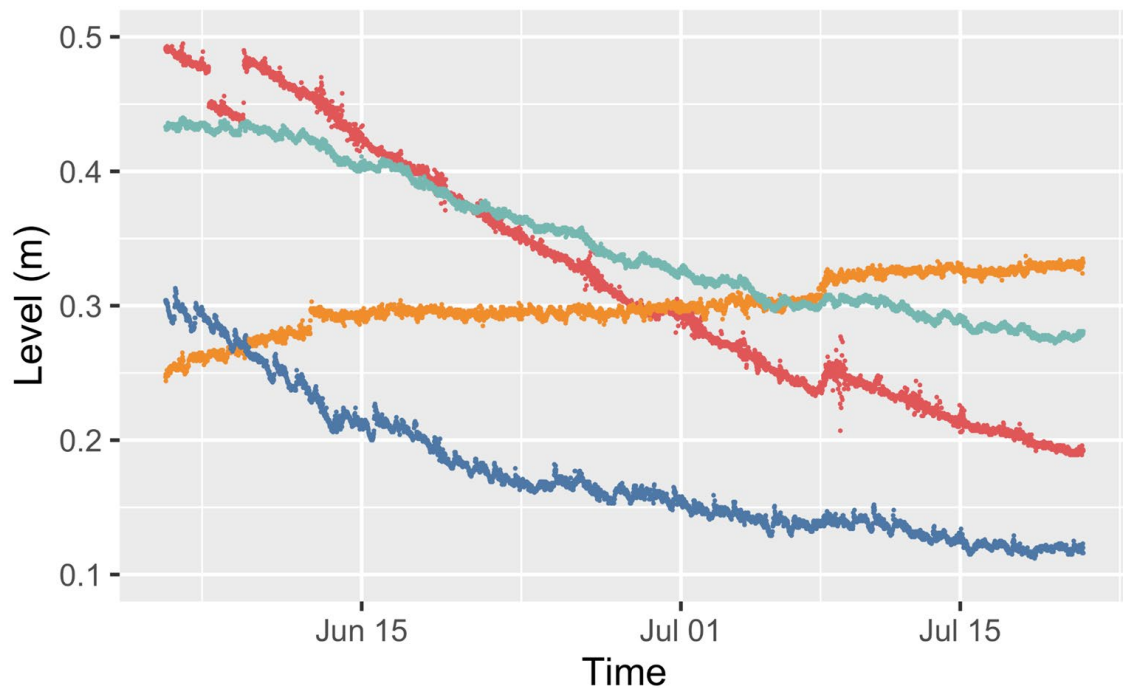
University of Colorado  
Boulder



BROWN



# Yukon Flats, Alaska



17 lakes with water level measurements from early June through late August.



University of  
Massachusetts  
Amherst



THE UNIVERSITY  
of NORTH CAROLINA  
at CHAPEL HILL



University of Colorado  
Boulder



BROWN



# Yellowknife Lakes

30 lakes surveyed over 2 days in partnership with ECCC



University of  
Massachusetts  
Amherst



THE UNIVERSITY  
of NORTH CAROLINA  
at CHAPEL HILL



University of Colorado  
Boulder



BROWN