

CAL/VAL SITES

(ALREADY SURVEYED AND IN OPERATION)

- 1- MARONI RIVER (FRENCH GUIANA)
- 2-NEGRO RIVER (BRAZIL)
- 3-AMAZON & TAPAJÓS RIVER (BRAZIL)
- 4-PARAGUAY RIVER (BRAZIL)
- 5-SÃO FRANCISCO RIVER (BRAZIL)

RIVER SCIENCE WG SWOT “CAL/VAL” OVER AMAZON RIVERS

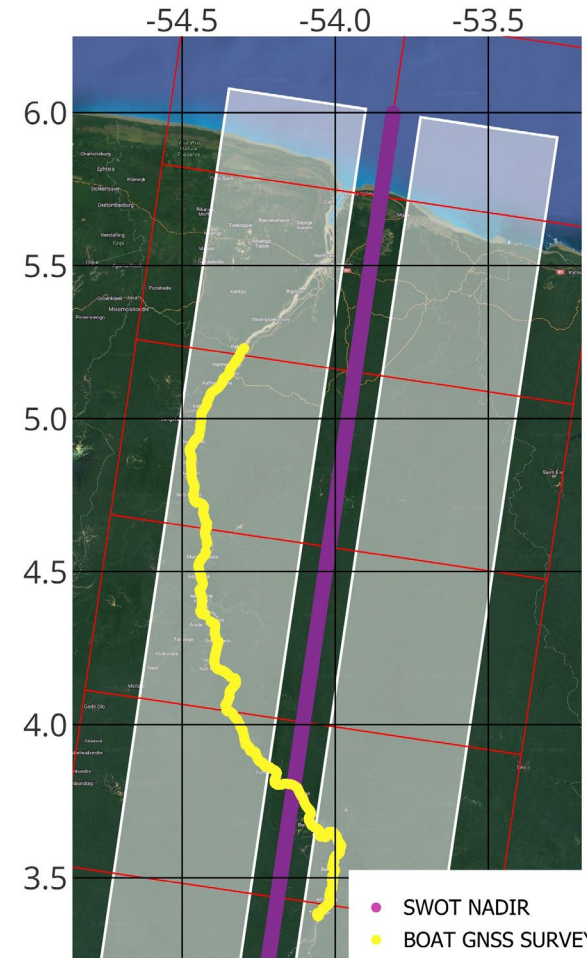
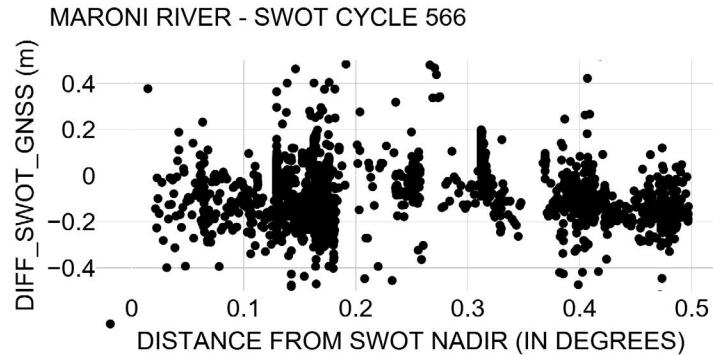
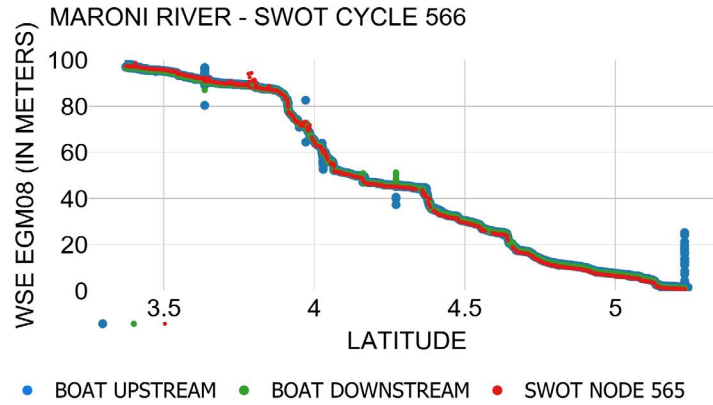
Daniel Medeiros Moreira,
Fabrice Papa, Stéphane
Calmant Adrien Paris, Jean-
Francois Cretaux, Felix
Perosanz , Jefferson Melo,
Fabien Durand, Leandro
Guedes, Ricardo Duarte,
Pauline Brossat, Robson
Azevedo, and many others

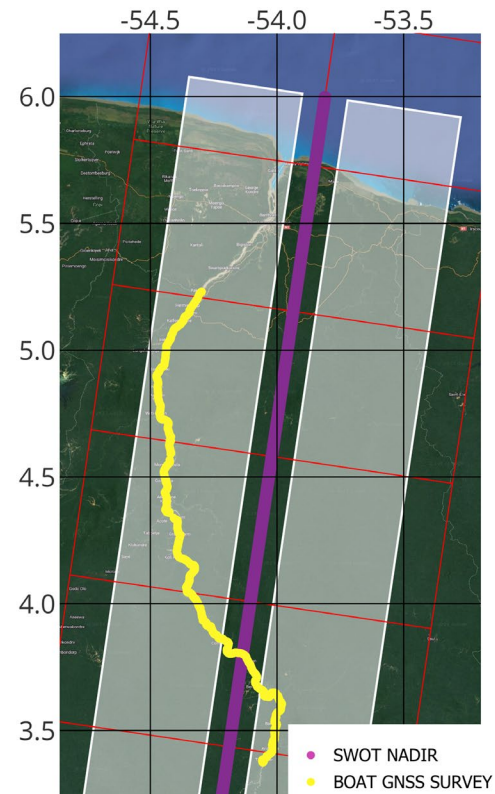
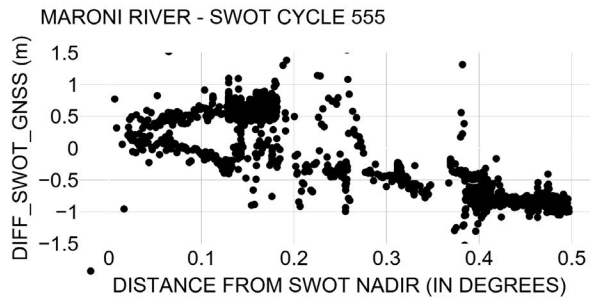
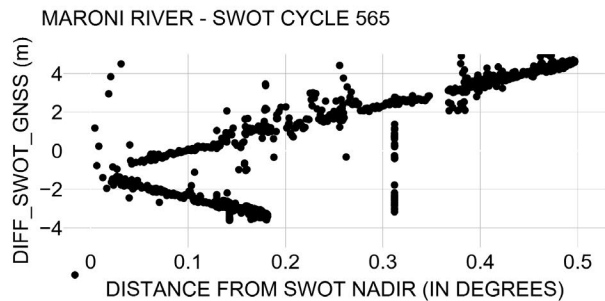
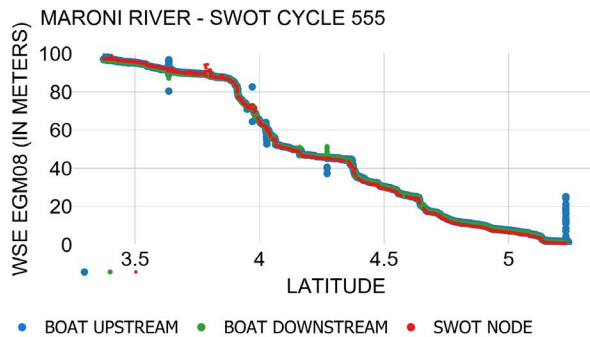
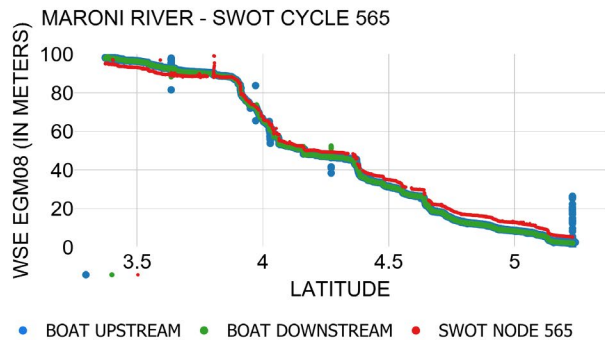


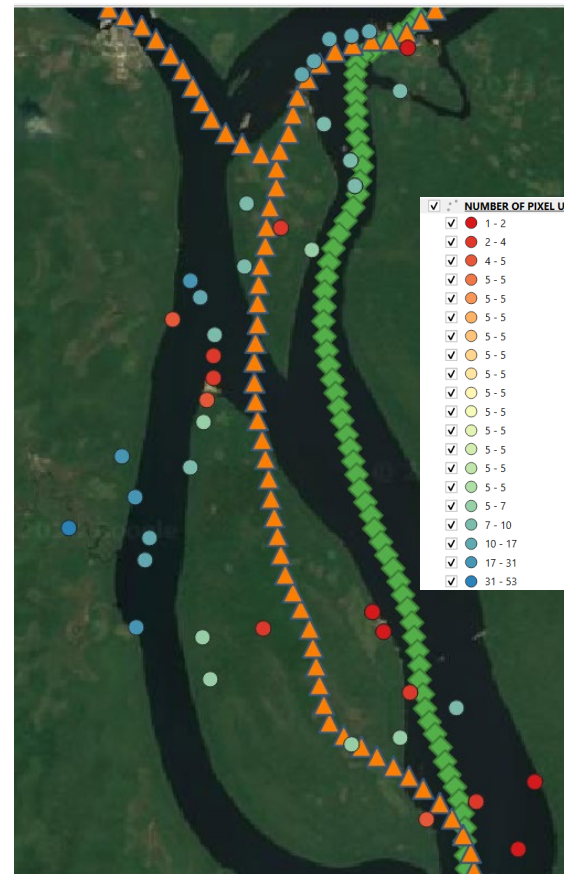
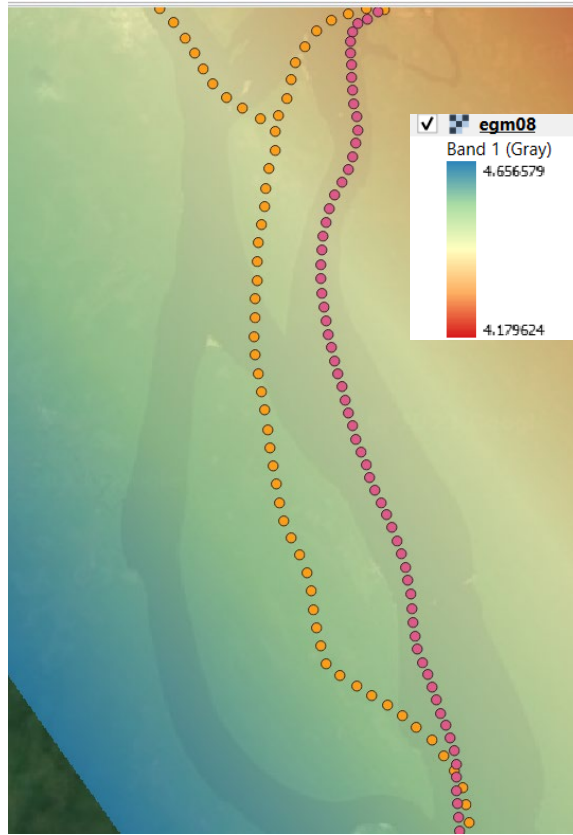
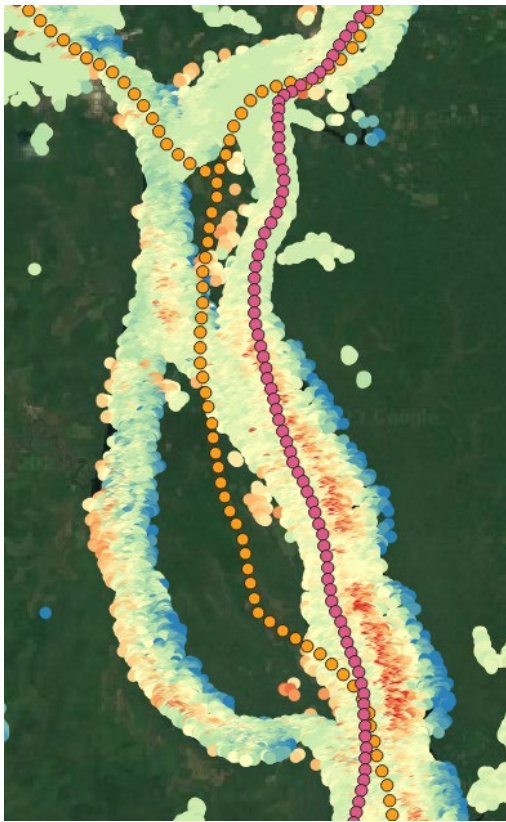
....., UFRJ, UEA, UFAM, UFPE, IPH, UFOPA, UNB,
ANA and many other institutions are giving support

MARONI CAL/VAL SITE SURVEY FROM 06th to 18th of June - 2023

Team : Stéphane Calmant,
Adrien Paris, Pauline Brossat,
Malika, Pierre Andre Garambois,
Jacques Verron and many others.





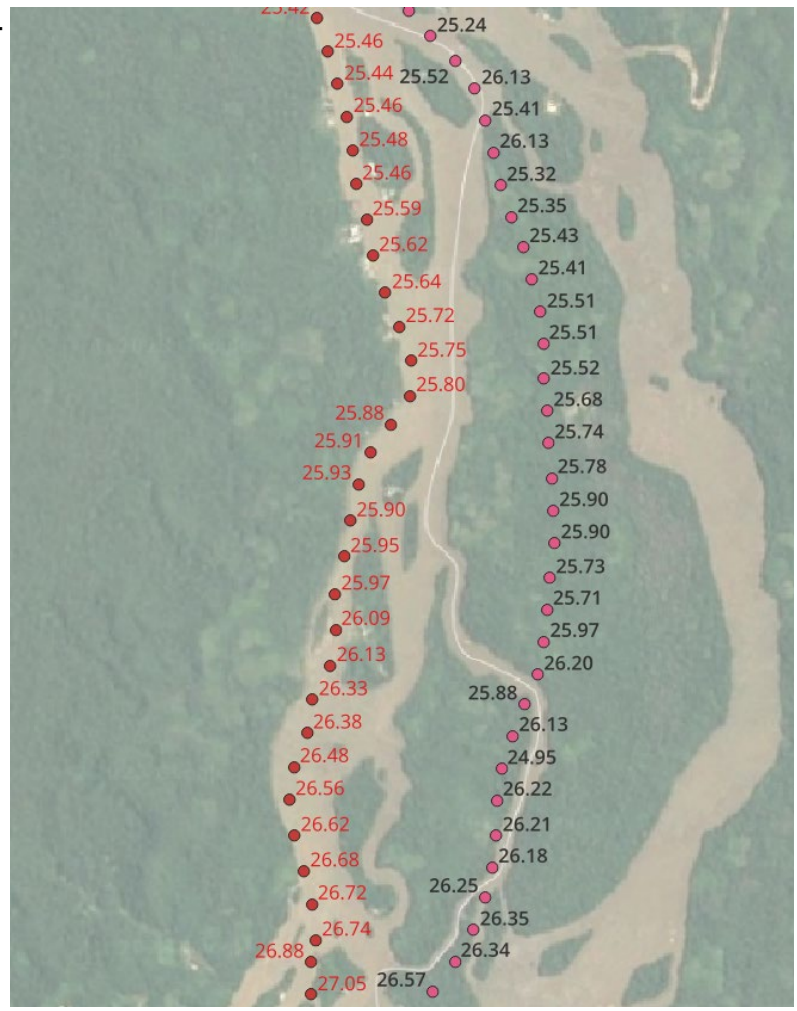
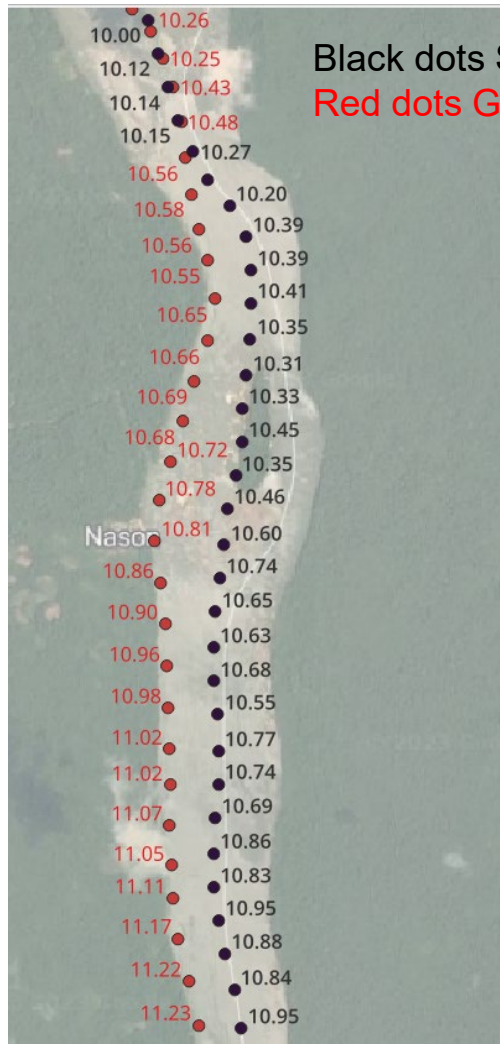


SWOT_L2_HR_PIXC_555_022_NEGRO

- 57 - 58.9
- 58.9 - 60.7

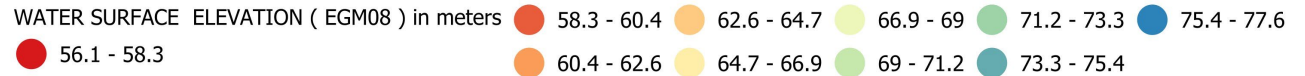
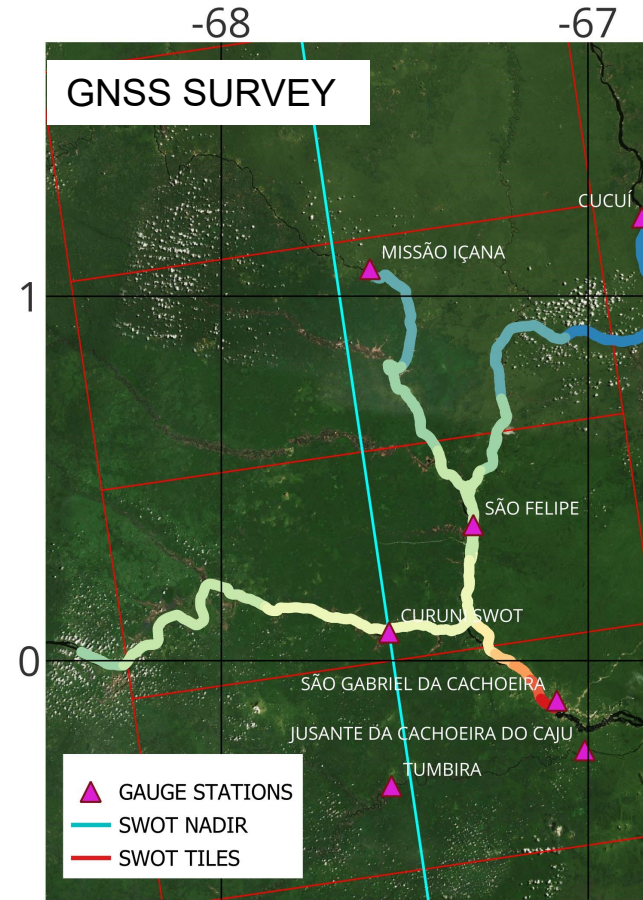
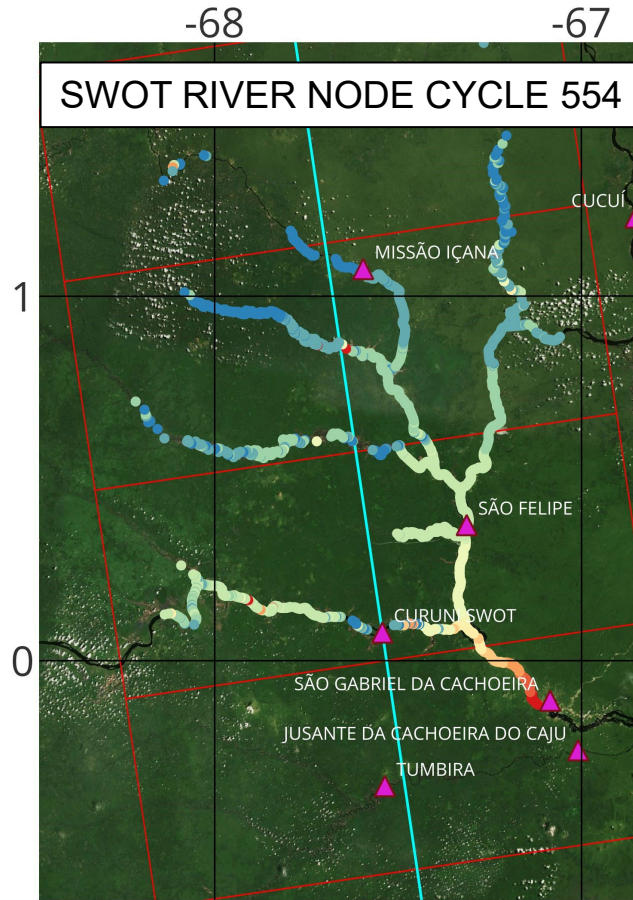
- 60.7 - 62.6
- 62.6 - 64.5
- 64.5 - 66.3
- 66.3 - 68.2
- 68.2 - 70.1
- 70.1 - 71.9
- 71.9 - 73.8
- 73.8 - 75.7
- 75.7 - 77.5
- 77.5 - 79.4
- 79.4 - 81.3
- 81.3 - 83.1
- 83.1 - 85

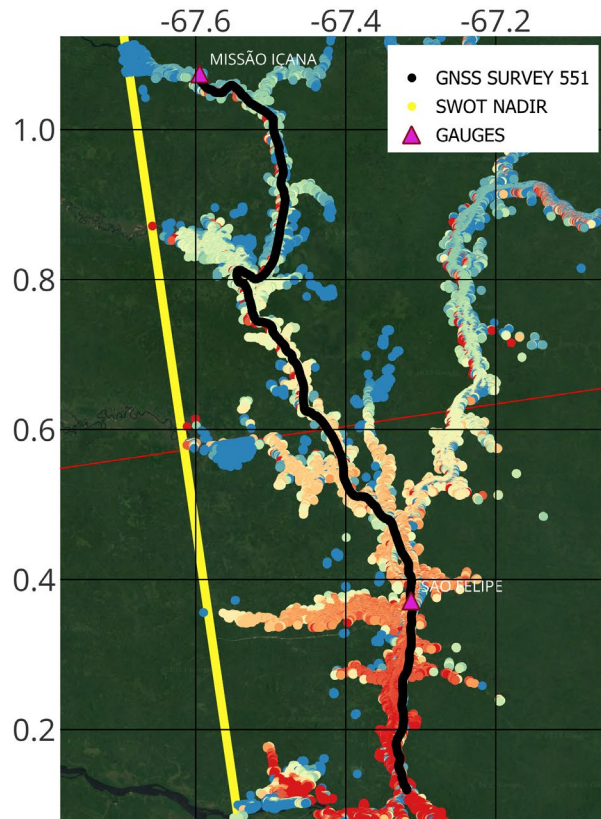
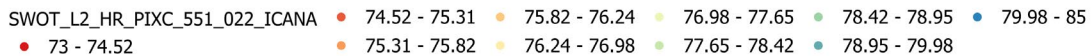
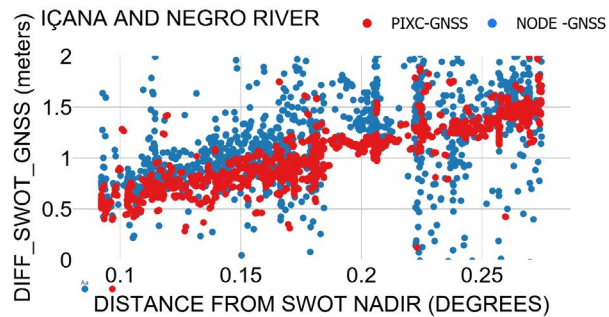
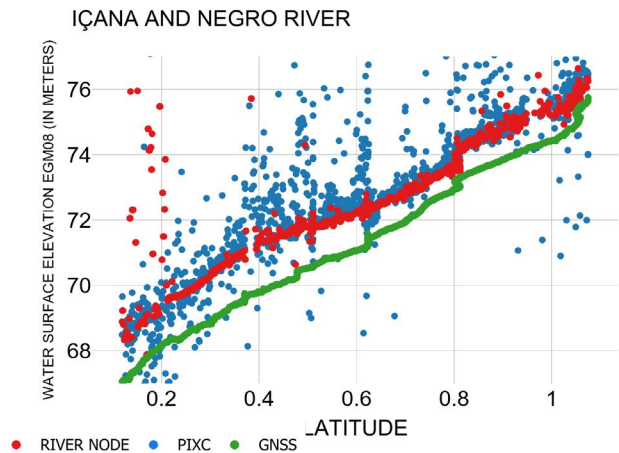
Black dots SWOT
Red dots GNSS

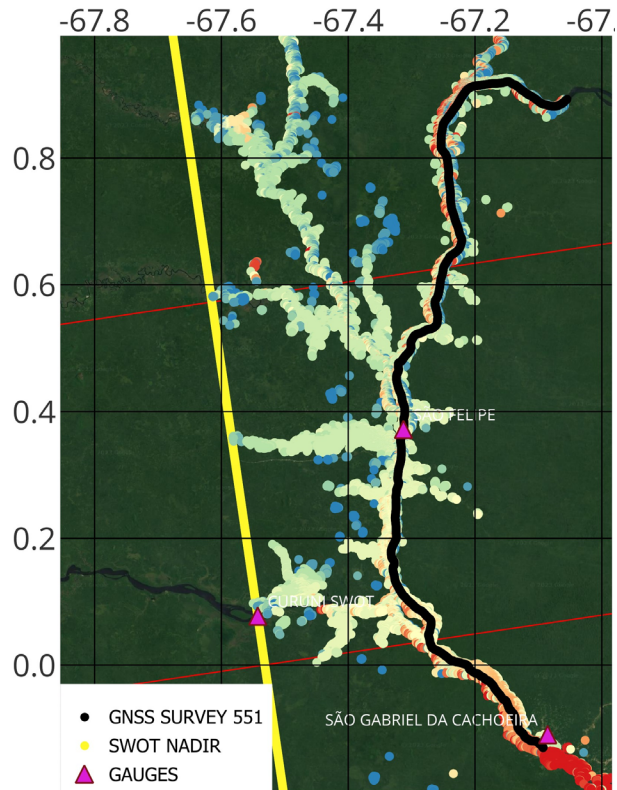
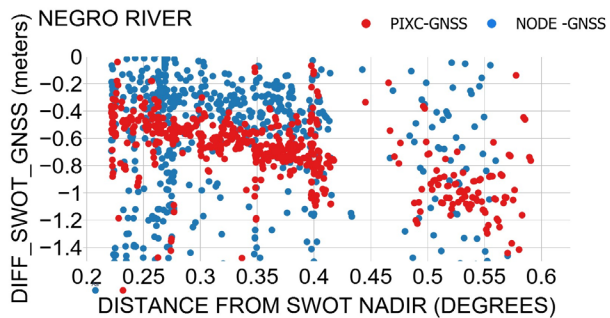
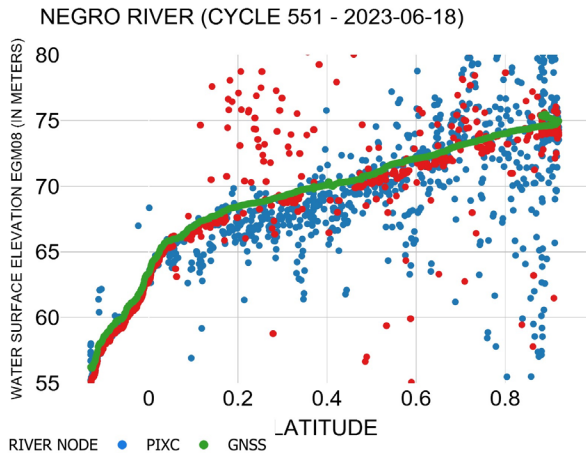


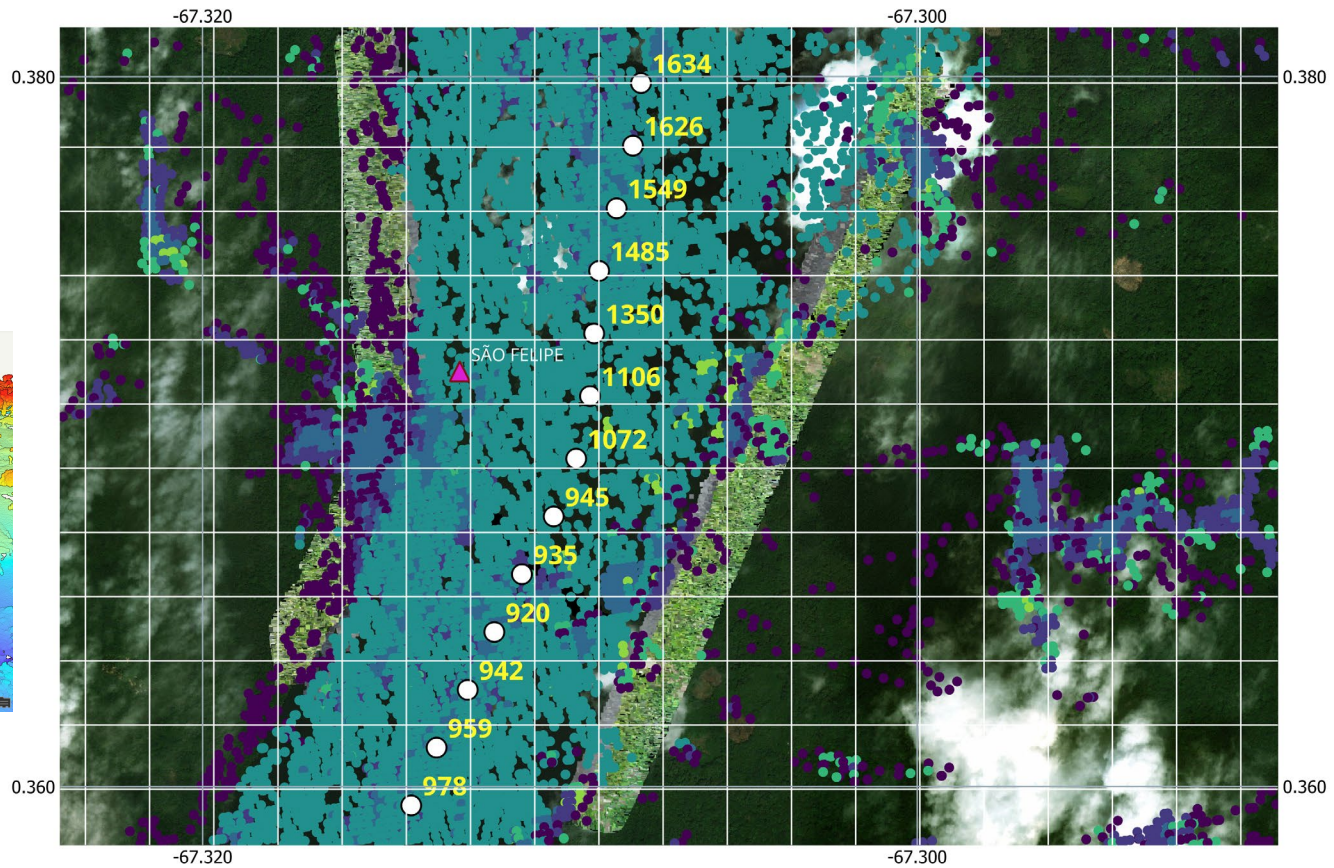
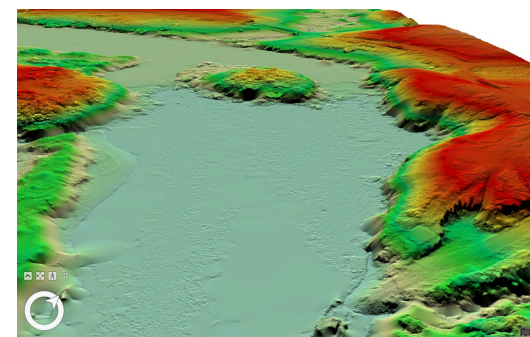
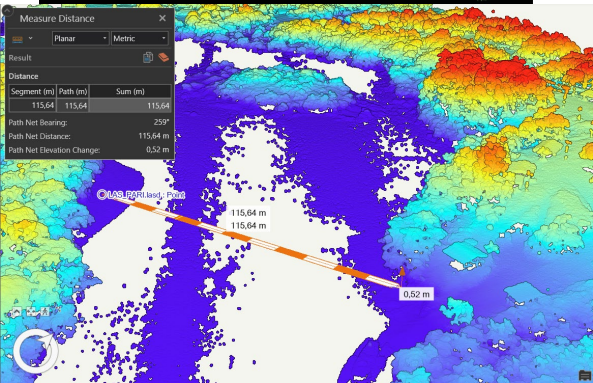
NEGRO CAL/VAL SITE SURVEY FROM 06th to 18th of June - 2023

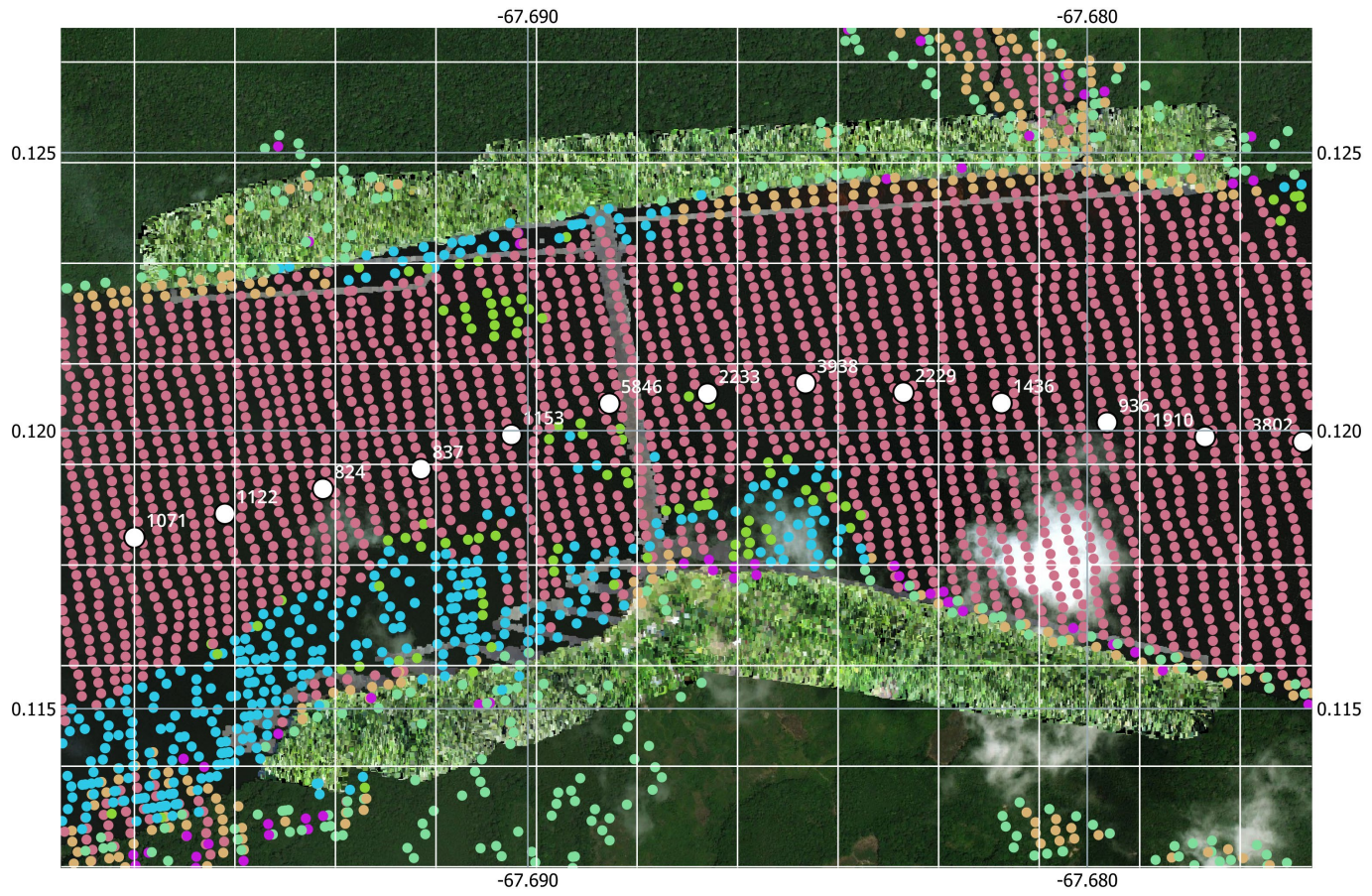
Team : Daniel Moreira, Fabrice Papa, Pauline Brossat, Jefferson Melo, Ricardo Oliveira, Robson Azevedo, Daniel Garcia, Malika, Arthur Abreu, Taina Conchy, Jacques Verron, Marquinho, Fábio Viveros, Ramos.







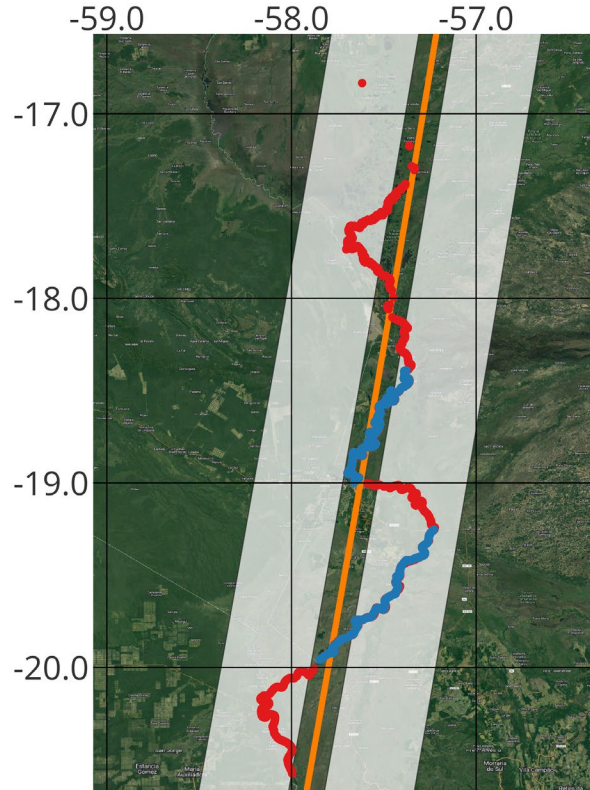




FOR THE QUESTION OF SWOT HR DATA OVER NADIR ZONES

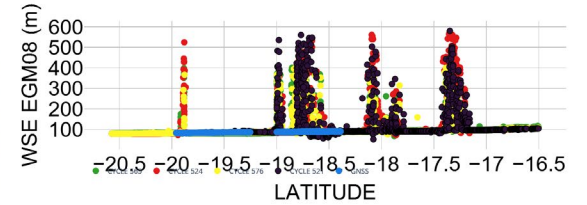
PANTANAL CAL/VAL SITE SURVEY FROM 14th to 22th of May - 2016

Team : Daniel Moreira, Jean-François Cretaux, Pierre-Andre Garambois, Amanda Montazem, Mauro Campos.

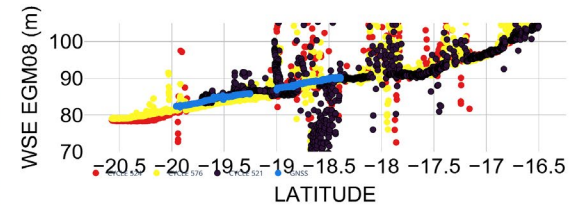


*GNSS blue swot all other colors

PARAGUAY RIVER SWOT CAL/VAL SITE



PARAGUAY RIVER SWOT CAL/VAL SITE



CONCLUSIONS AND FUTURE WORK

Many work remains to be done

FROM DATA AT CAL/VAL ORBITS

Better statics analysis of SWOT and GNSS slopes using new versions of reprocessed SWOT data

Analyse time séries of SWOT water level over cal/val sites and compare to in situ gauges

River width validation at gauge stations surveyed by Drone

Wet tropo correction evaluation

Model Hydrological loading effects over Amazon