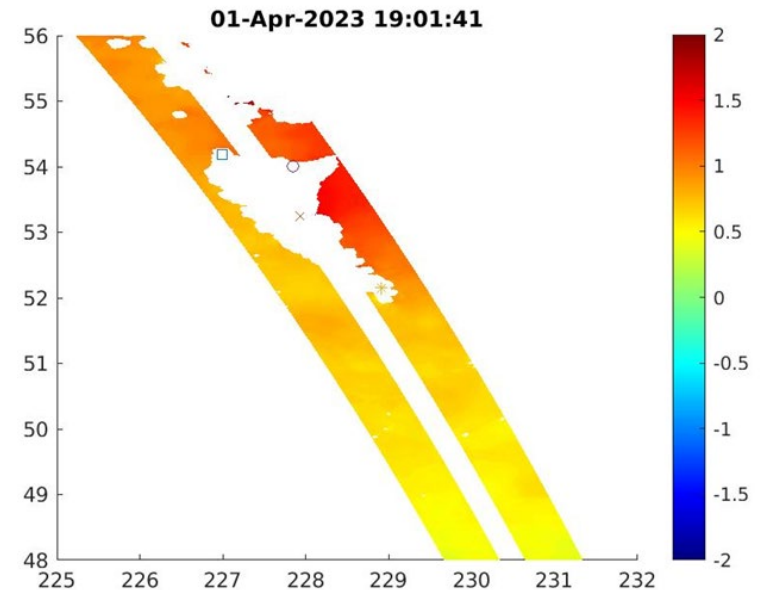
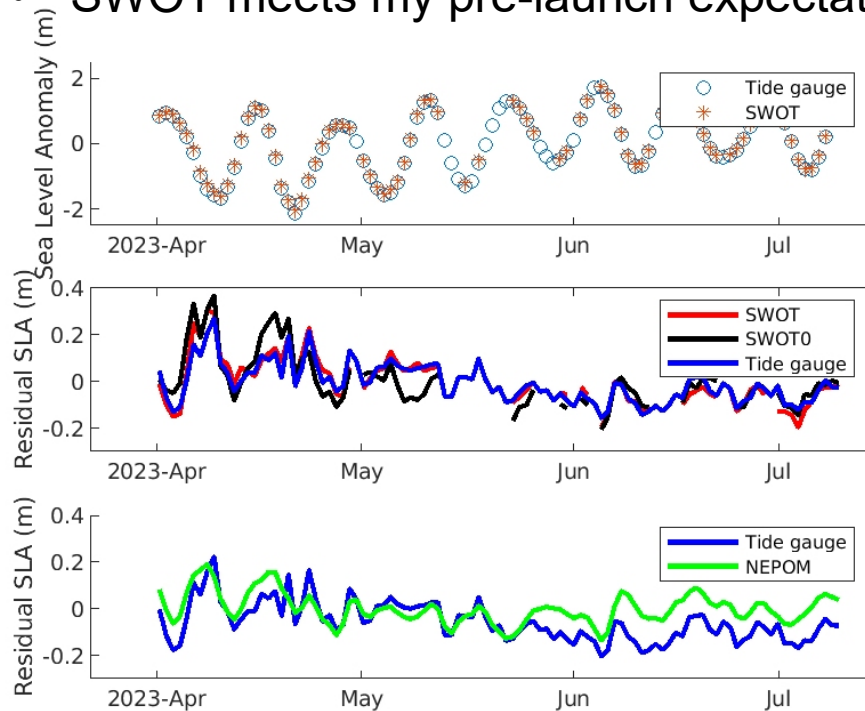




# SWOT Comparison with Tide-gauge Data and Model

Guoqi Han, Fisheries and Ocean Canada

- SLA and non-tidal SLA are compared with tide-gauge data at five stations on Canada's west and east coasts during the cal/val phase.
- The RMS difference are 3-5 cm between SWOT and tide gauges.
- SWOT data have smaller difference than a 2-km ocean circulation model does.
- SWOT meets my pre-launch expectation.





# SWOT Coastal and Shelf Currents

Guoqi Han, Fisheries and Ocean Canada

- SWOT SSH anomalies are mapped daily off Canada's west coast from Aug 2023 to Jan 2024. Working on improving mapping method.
- Weekly and monthly SSH maps and geostrophic current anomalies are calculated.
- SWOT monthly results show expected seasonal changes in the major coastal and shelf edge currents. Weekly results are to be evaluated.
- Need improved coastal/shelf MSS/Geoid for absolute currents.

