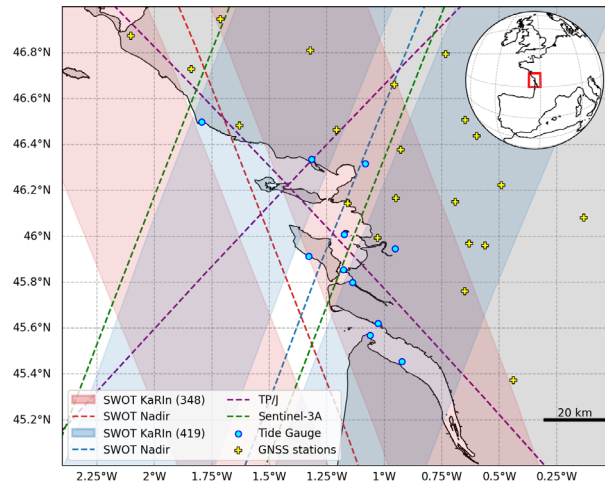
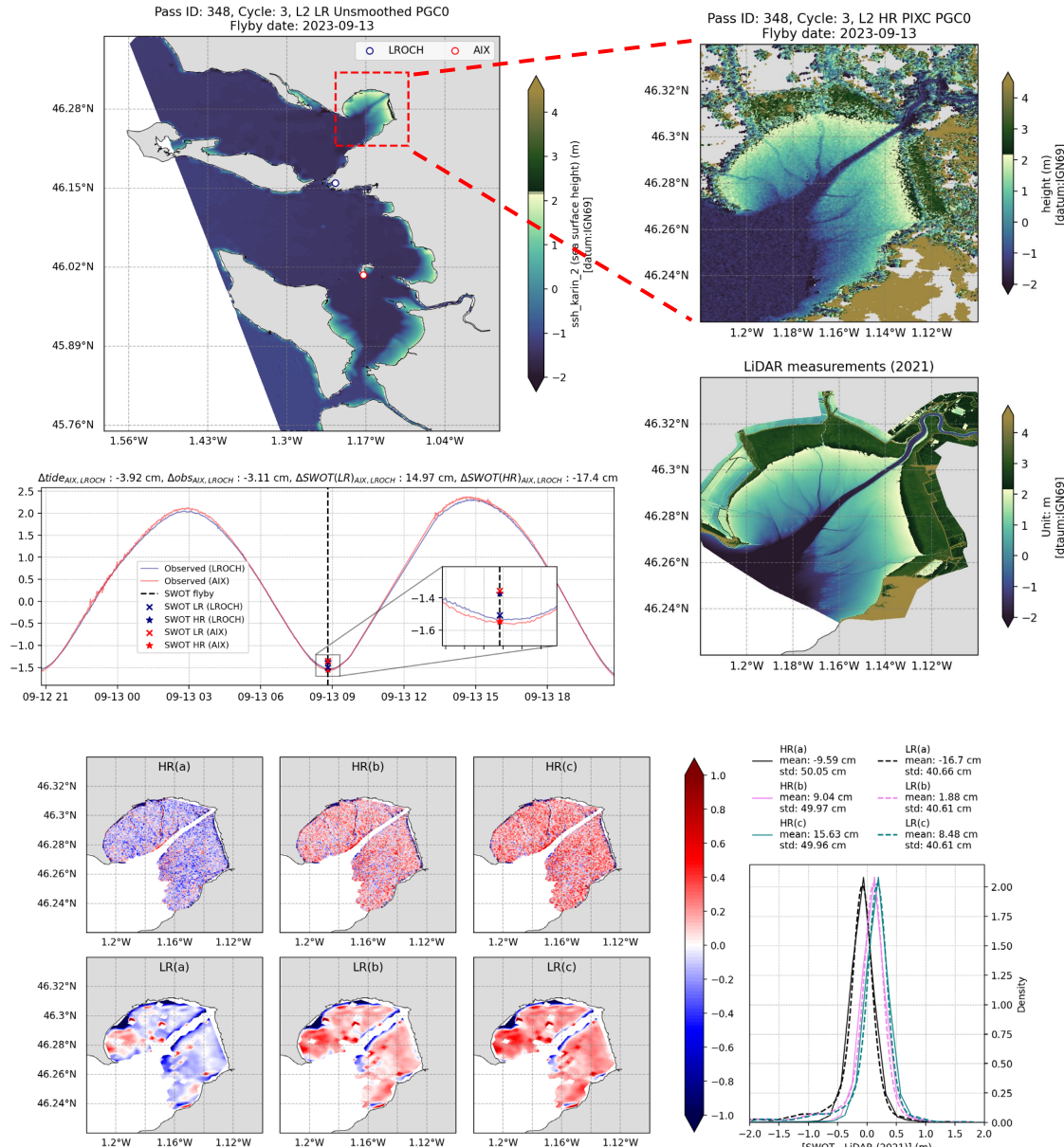


Intertidal Topography: Aiguillon Bay, Pertuis Charentais (France)

Study Area



- Coastal region of Pertuis Charentais, France.
- Semi-enclosed macro-tidal coastal regime.
- Located under 2 SWOT passes (348, 419) along with several nadir altimetry mission.
- Coverage of both LR and HR data products.
- Covered by a network of tide gauges and GNSS stations.



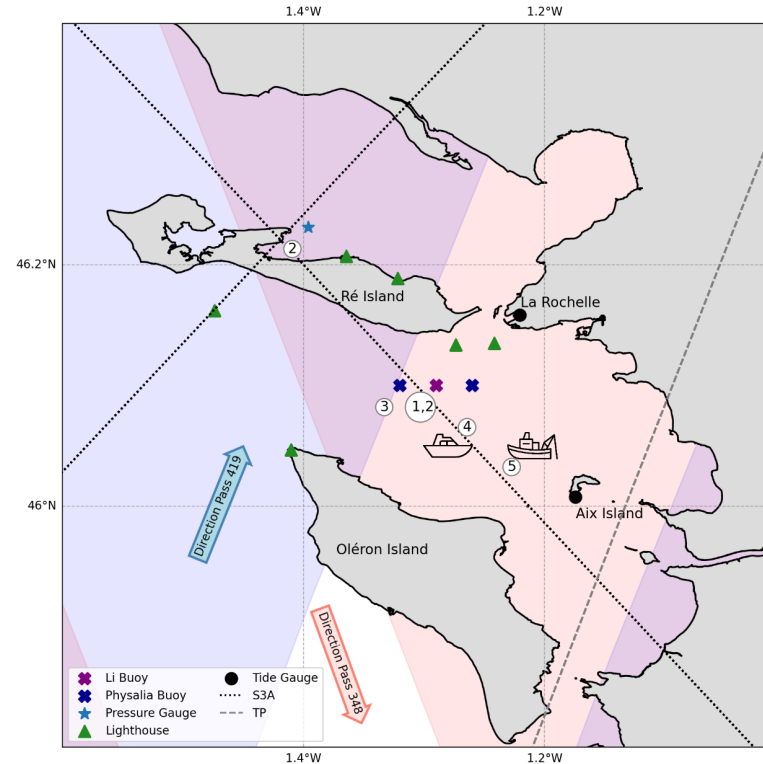
- Intertidal topography with SWOT during low tide.
- Comparison with LiDAR measurement shows good agreement but not consistent between cycles
 - Cross-over correction in SWOT products
 - Vertical datum connection
 - Morphological change
- Possible source of bias with observation

For detail, please visit our poster

Intertidal Topography: Aiguillon Bay, Pertuis Charentais (France)

Ongoing validation activities focusing on

- Comparison of SWOT ssh with in-situ observation
- Estimation of cross-swath bias
- First field campaign has been done on 10th June, 2024
- Next campaigns
 - 1st July
 - 22nd July



PAMELi with support vessel, Estran



Cyclopée system :
GNSS antenna/receiver
and altimeter



GNSS carpet (CalNaGeo)
towed by boat



Physalia Buoy



Micro-carpet
anchored at Li Buoy



Pressure Gauge

For detail, please
visit our poster